

**COMPLETE.  
SMART.  
OPEN.**

**iVMS-5200** Professional  
**VMS PLATFORM**

# ■ iVMS-5200 Professional

A VMS Platform to Meet All Your Security Needs

Hikvision iVMS-5200 Professional is a centralized video software that allows you to manage all of your business security subsystems in one platform. Managing from a single platform gives you control over your security subsystems including video surveillance, access control, license plate recognition, business intelligence and video wall.

The modularized design meets your increasing vertical solution needs while giving you the freedom to select components for your specific demands. This centralized platform simplifies and streamlines operation and improves working efficiencies. Additionally, a unified platform reduces the total cost of your system operation and maintenance costs.

The iVMS-5200 Professional answers demands for enhanced and robust security, simplified operation and optimized security management through Complete vertical market solutions, Smart features, and Open architecture.

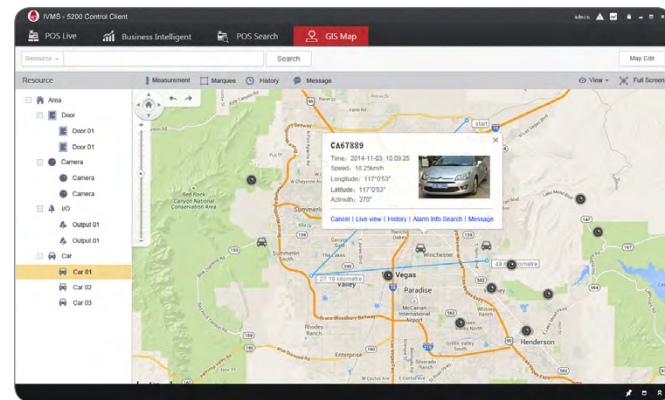




Hikvision iVMS-5200 Professional is a **Complete, Smart and Open** solution that fully integrates all the elements of your business security.

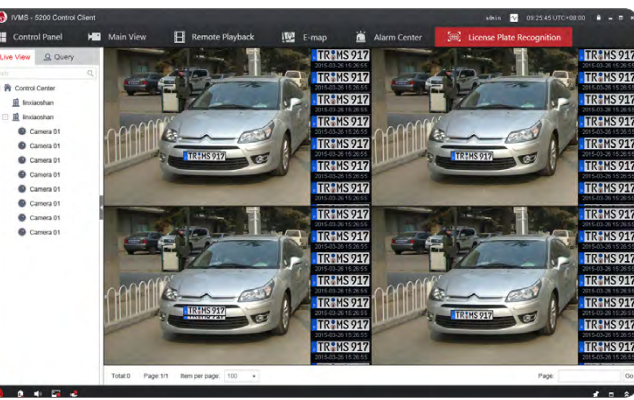
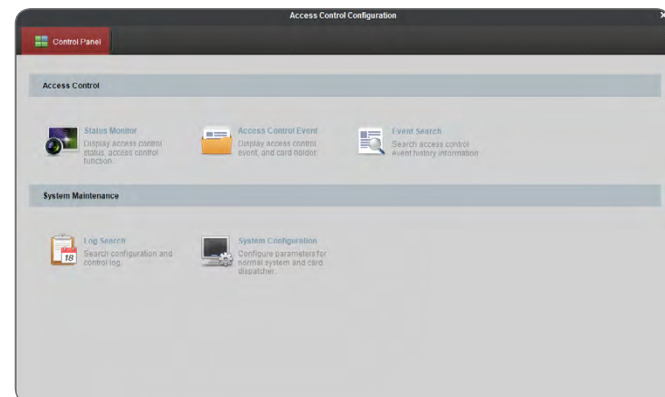
# COMPLETE

Your software needs vary according to your industry, so Hikvision continually releases vertical add-on modules to iVMS-5200 Professional in order to develop a comprehensive vertical portfolio. As your requirements change with the scope of your business, the vertical, modularized design is capable of adjusting to your needs.



## GIS Map Module

A variety of GIS map functions are supported like: Track cars with Mobile Video Recorder on board in real time, play back the history driving route, view the live video and search the history alarm, send message to the Mobile Video Recorder, measure distance, and edit the color/picture of the Mobile Video Recorder icon shown on the map.



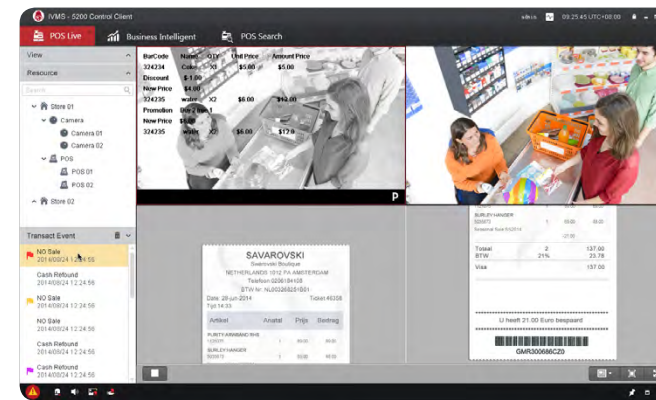
## License Plate Recognition Module

Allows you to automatically capture license plate numbers, letters, and color and vehicle model, logo, and color. Date and time are also recorded to enforce parking permits or time-limited zone rules and to conduct lot inventories.

## Access Control Module

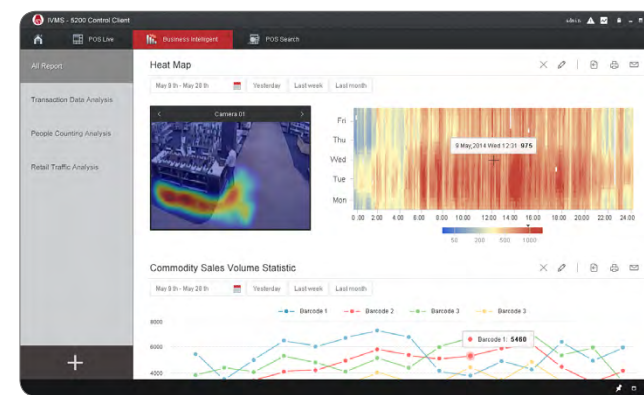
This system checks permission of door access and authorizes you to manage permissions centrally from a single location without headaches. It offers an enhanced integration with your CMS so you can conveniently manage video alarm events with either system.

Our Access Control Configuration software is browser-based, allowing you to access your system anytime from anywhere. You can also assign door privileges and manage employee or visitor credentials quickly and easily, never needing to be tied to a specific workspace.



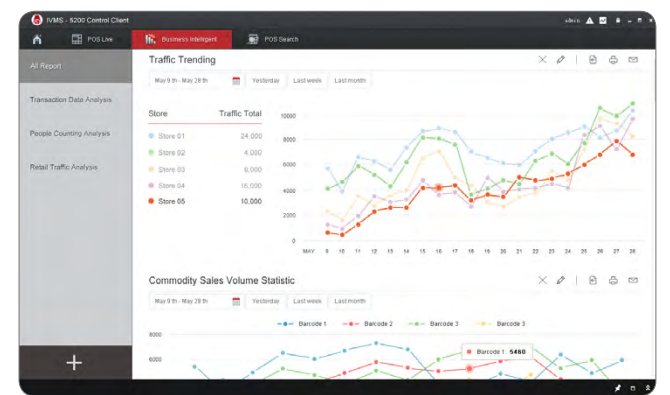
## Transact Module

When integrated with POS, POS data is displayed alongside corresponding video. An irregular transaction will be detected and recorded, instantly triggering an alarm. The module supports Smart search based on receipt number or POS terminal and works as an effective investigation tool for loss prevention and resolving customer disputes.



## Business Intelligence Module

Accurate, reliable sales reports are generated to acquire transaction data including commodity sales volume, cashier's performance, and top selling items. Facets like distribution, trends, and conversion rate reports can be generated for business analysis. This solution is ideal for making intelligent business decisions in convenience store and chain store settings.





Hikvision iVMS-5200 Professional is a **Complete, Smart and Open** solution that fully integrates all the elements of your business security.

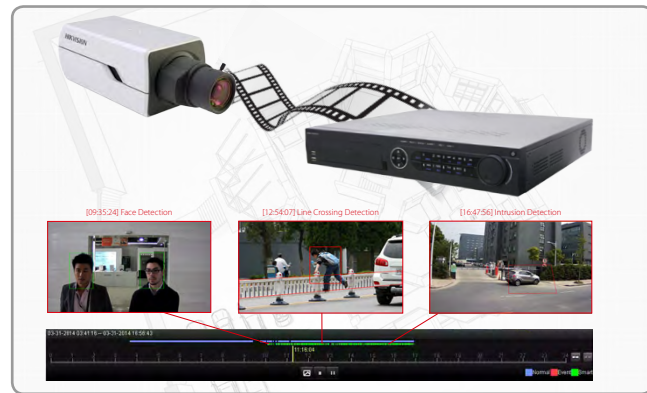
# SMART

Hikvision's iVMS-5200 Professional software supports Hikvision's full range of Smart functions including Smart search and playback, Smart detection and record backup, as well as Smart applications like people counting, heat map and interactive map.



## People counting

Accurately counting traffic that enters or exits your store or facility captures people flow data, inventory, and other statistics for analysis, empowering you to make smarter business decisions.



## SMART Playback and Search

Allows Smart search based on motion detection, line crossing, and intrusion detection. This feature helps to quickly locate relevant video, relieving operation personnel from time-consuming searching.



## Smart Maintenance

The equipment and server running status is monitored online in real-time. This helps to quickly identify and easily solve any Problems.



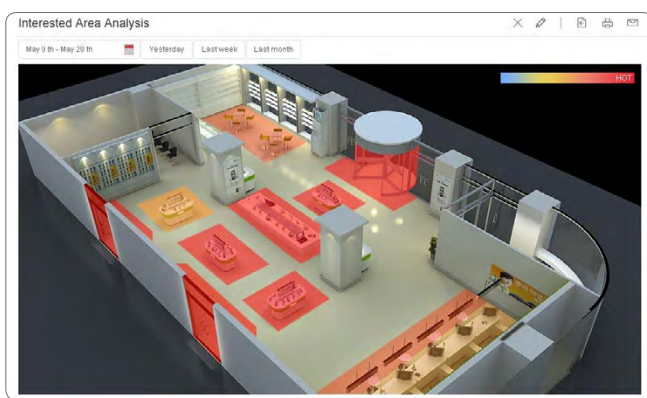
## Line Crossing Detection

This function can detect objects such as persons or vehicles crossing a defined virtual line. It is an ideal solution for monitoring entrances, parking lots or other limited areas.



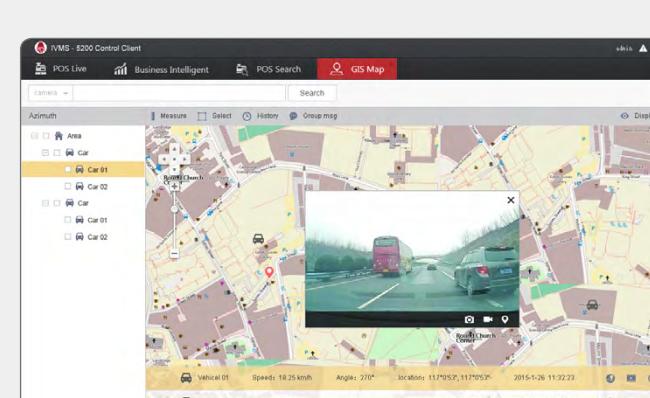
## Intrusion Detection

In the case of intrusion detection, alarm and event recording are auto-triggered simultaneously. Applying the latest algorithms, it automatically analyzes the intruder's dimension ratio to reduce false alarms. These features are extremely beneficial for defined area protection.



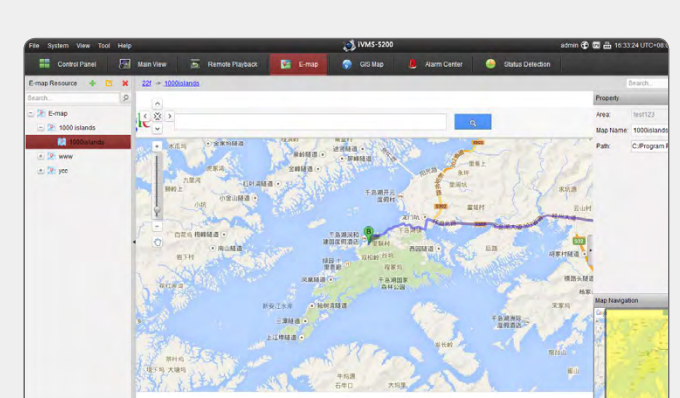
## Heat map

This graphical representation of data uses colors to represent the individual values contained in your system. It provides sophisticated heat maps, allowing you to understand complex data sets and determine which areas visitors scan most frequently.



## GIS map & E-map

GIS map module provides location information of Mobile Video Recorder and mobile terminal in real time, Can track the Mobile Video Recorder in the GIS map, play back the track of car, view the live video, etc. Also support load local map file (\*.png / \*.jpg / \*.bmp / \*.svg) and main maps & sub maps.



## Convenient Map Operation

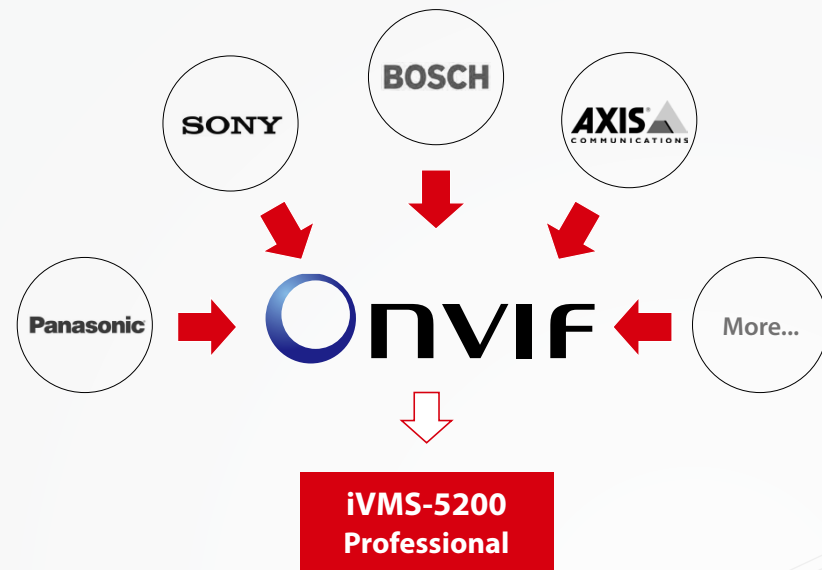
Permits users to add various points on the map to provide a convenient, efficient way for live viewing and handling the alarm information via the map system events. This operation provides instant notification and verification and optimizes the overall event handling process.



Hikvision iVMS-5200 Professional is a **Complete, Smart and Open** solution that fully integrates all the elements of your business security.

## OPEN

As an open platform, Hikvision iVMS-5200 Professional supports the access of standard protocol supporting cameras and encoders and only requires standard IT hardware for installation. Additionally, the SDK platform is available to third parties for integration.

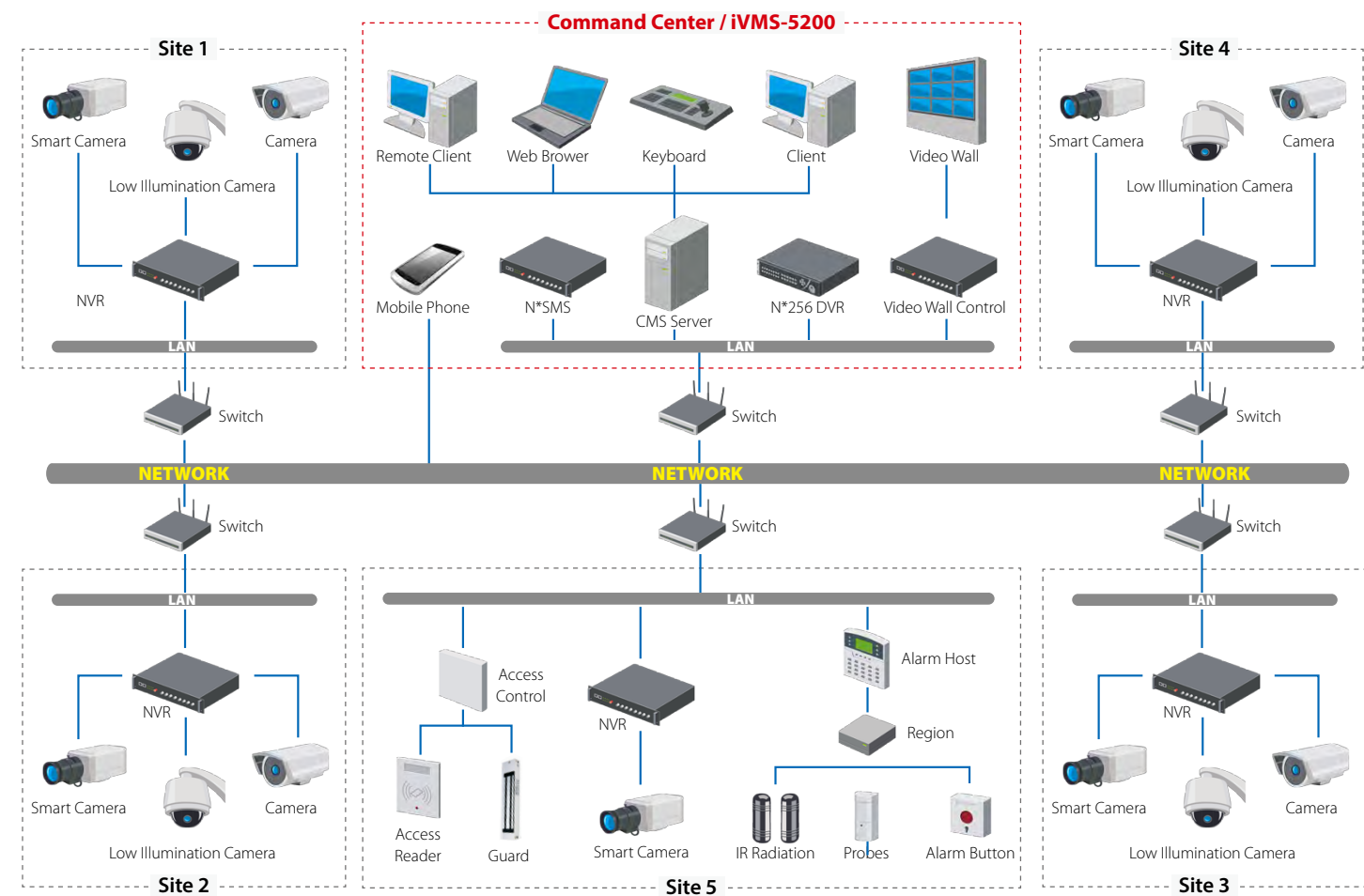


### Open Architecture

The iVMS-5200 Professional supports the access of leading CCTV equipment by standard ONVIF protocol. Even third party Proprietary and leading POS terminals like NCR and POS are supported, providing customers with flexible hardware alternatives.

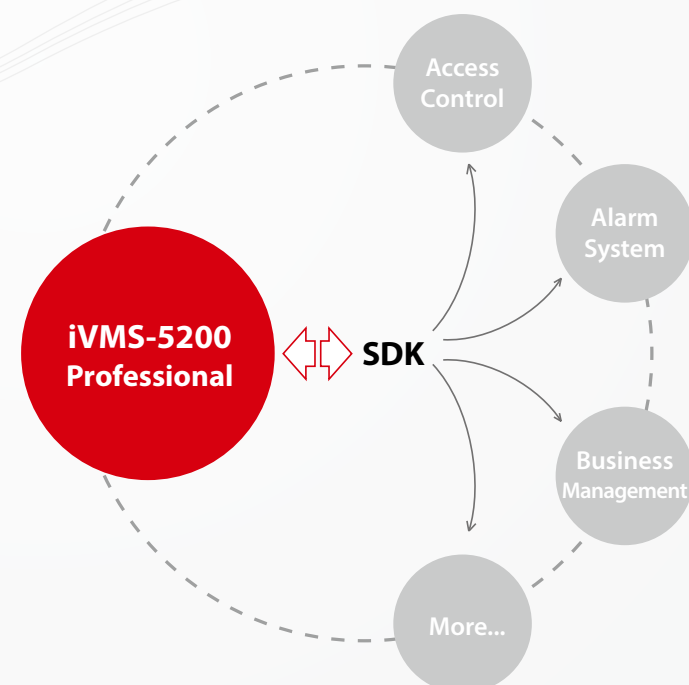
Being a comprehensive video surveillance platform, Hikvision's iVMS-5200 Professional can centrally manage all your security system distributed across different geographical regions, including video surveillance, alarming system, access control system etc. with the intuitive interface and multiple access, you have the full freedom to manage, monitor all your security system in the Central site conveniently and efficiently, the following is the network topology of a typical deployment of iVMS-5200 system.

### iVMS-5200 Professional Solution Topology



### Open System Integration

Hikvision iVMS-5200 Professional's open architecture makes it easy to integrate with your existing security and business system and fully tap into its potential. Hikvision's iVMS-5200 platform SDK is also available to third parties for your business to realize system deep integration.







**Retail**

As retail loss prevention tactics shift from traditional analog to 24/7 real-time video monitoring, Hikvision iVMS-5200P is the ideal tool to manage this transition. Meanwhile, the rapid growth of online shopping is having a dramatic impact on retailers, forcing retail owners to change their operations to focus on consumer behavior and gathering business intelligence.

**Concern:**

- Loss Prevention
- Transaction
- Business Intelligent

**Required Feature:**

- Seamless Surveillance
- POS
- People Counts
- Heat Map



**Residential**

As an open platform, the Hikvision iVMS-5200 Pro integrates video surveillance, access control and alarm for building management. This solution can centrally manage various events such as perimeter intrusion detection, fire alarms, smoke alarms, and more, pushing alarm information to the security force to enhance response time and resident safety.

**Concern:**

- Building Management
- Criminal Surveillance
- Criminal Alert

**Required Feature:**

- Open Platform
- Intrusion Detection
- 24/7 Recording
- Behavior Analysis



**Parking lot**

Widely used in parking lot applications, the Hikvision iVMS-5200 Pro solution provides low light technology and real-time HD video recording. With audio detection functionality, this comprehensive solution can trigger alarms, notifying the command center of unexpected events. The available License Plate Recognition (LPR) module enables car registration and evidence capture.

**Concern:**

- Crime Surveillance
- Criminal Alert
- Parking Lot Management

**Required Feature:**

- Low Light Surveillance
- Full HD
- LPR
- Audio Detection Alerts



**Banking**

Many feel the banking industry has higher security demands than other industries. Experienced in delivering banking solutions, Hikvision understands the unique needs of this complex market. Hikvision iVMS-5200 Pro not only satisfies needs for IT security and high availability of financial institutions, but can also connect major IP cameras as an open platform. Hikvision provides the SDK to ensure compatibility and stability between different systems. Hikvision also offers complete solutions for ATM applications.

**Concern:**

- IT Security
- System Availability
- ATM

**Required Feature:**

- AES Encryption
- Open Platform
- Server Failover
- ATM solutions

Products/ Version	iVMS-5200 Professional
Type of Deployment	Single-server
Number of Connected Devices Per System	1024
Number of Supported Cameras Per System	1024
Number of Supported Alarm Inputs Per System	1024
Number of Supported Alarm Outputs Per System	1024
Number of Online Clients Per System	16
Maximum Numbers of Users	Unlimited
User Permission Levels	100
Max. Number of Storage Servers Per System	16
Max. Number of Cameras Per Storage Server	64
Max. Bandwidth of Video Input Per Stream Media Server	200*2Mbps
Max. Bandwidth of Video Output Per Stream Media Server	200*2Mbps
ONVIF Compliant Device Support	√
GIS Integration	√
Language	English, Spanish, Russian, French, Italian, Polish, Turkish, Dutch, Portuguese, German, Romanian, Czech, Bulgarian, Hungarian, Thai, Danish

Recommended Hardware/Software	
Server	
CPU	Intel Xeon E5-2620 @ 2000 MHz and above
Memory	DDR3 8GB
Network	2 x GbE
OS	Windows Server 2008 R2 SP1 and above
Database	PostgreSQL
Client	
CPU	Intel Core i5 750 and above
Memory	DDR3 4GB
Network	Intel/ RealTek 1000Mbps
GPU	Geforce GTX 460 and above <i>* Note: It is recommended to install the latest display driver for the graphic card.</i>
Control Client OS	Windows 7 / Windows 8
Web Client / Web Manager	IE8 and above / Firefox 3.5 and above / Chrome 8.0 and above



### **Hikvision USA**

Tel: +1-909-895-0400  
Email: sales.usa@hikvision.com

### **Hikvision Europe**

Tel: +31-23-5542770  
Email: saleseuro@hikvision.com

### **Hikvision Middle East**

Tel: +971-4-8816086  
Email: salesme@hikvision.com

### **Hikvision Russia**

Tel: +7-812-313-19-63  
Email: salesru@hikvision.com

### **Hikvision India**

Tel: +91-22-28469900  
Email: sales@pramahikvision.com

### **Hikvision Italy**

Tel: +39-0438-6902  
Email: info.it@hikvision.com

### **Hikvision France**

Tel: +33(0)1-85-330-450  
Email: info.fr@hikvision.com

### **Hikvision Spain**

Tel: +34-91-737-16-55  
Email: info.es@hikvision.com

### **Hikvision Poland**

Tel: +48-22-460-01-50  
Email: poland@hikvision.com

### **Hikvision UK**

Tel: +44-1628-9021-40  
Email: sales.uk@hikvision.com

### **Hikvision Singapore**

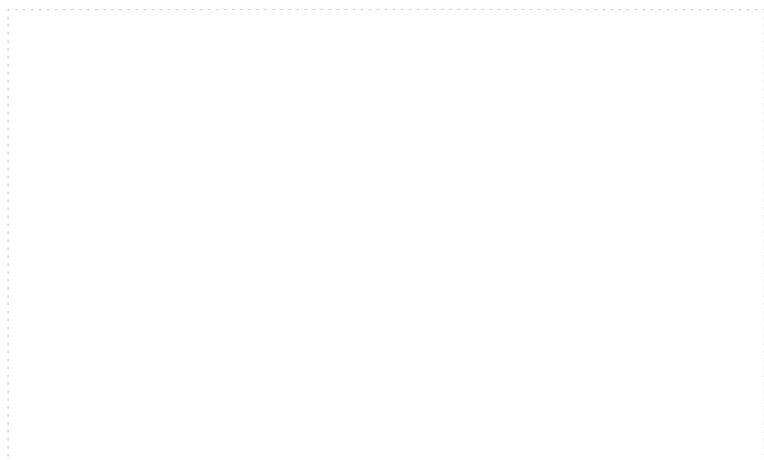
Tel: +65-6684-4718  
Email: sg@hikvision.com

### **Hikvision Oceania**

Tel: +61-2-8599-4233  
Email: salesau@hikvision.com

### **Hikvision Hong Kong**

Tel: +852-2151-1761  
Email: sales@hikvision.com



### **Headquarters**

No.555 Qianmo Road, Binjiang District, Hangzhou, China  
Tel: +86-571-8807-5998 Fax: +86-571-8993-5635  
Email: overseasbusiness@hikvision.com  
Technical Support: support@hikvision.com