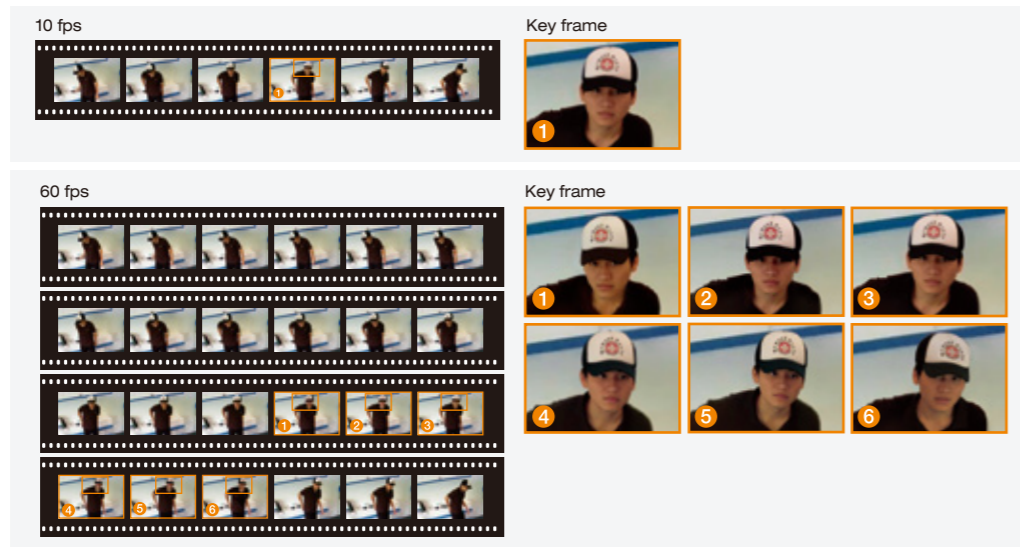




## 60 fps Raises Recognition Accuracy

The VIVOTEK SD8363E is able to transmit 60 fps @ 720p resolution with H.264 compression, whereas a conventional megapixel camera can generally only achieve 10 to 15 fps due to hardware limitations. 60 fps provides a significant advantage as it enables viewing and recording footage at an exceptional frame rate. This feature provides a more complete record of an event and ensures accurate target identification. The more images or frames that can be captured and delivered to a facial recognition database, the more forensic evidence is available for biometric pairing, significantly increasing the level of accuracy.



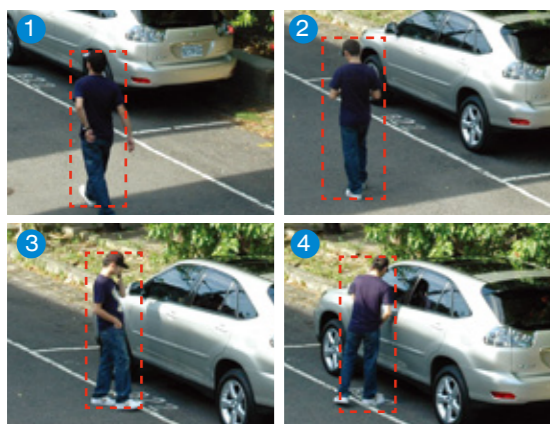
## Advanced Mechanism

SD8363E has a pan range of 360° and tilt range of 220°. With the additional 20° tilt range, the SD8363E is able to expand the viewing range to the field above the normal horizontal view. Additionally, the SD8363E is built with QuickPan technology, allowing for 360° endless panning at a speed of 450° per second. This allows users to quickly direct the camera lens to catch any object of interest in the field of view surrounding the camera.



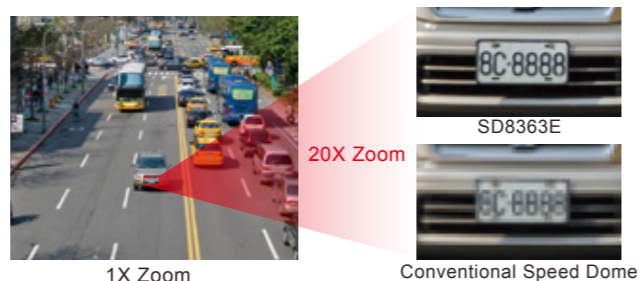
## Auto Tracking for Moving Objects

The auto tracking feature provides instantaneous reaction to suspicious moving objects over a wide area before an operator may be aware of activity. Users are able to define the target object size in order to render auto tracking more effectively.



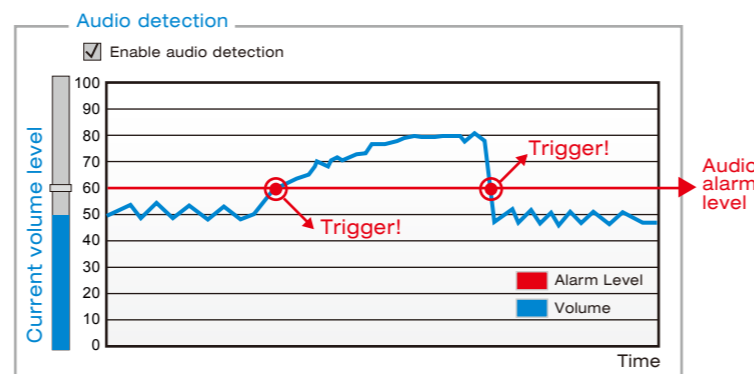
## Zoom Enhancement

Utilizing a 20x optical zoom lens, the SD8363E provides close-up images with 1080p detail and effectively extends the user's viewing distance. Even under limited bandwidth environments, users can take advantage of the VIVOTEK Zoom enhancement feature to obtain image detail as high as 1080p resolution using VGA-level bandwidth.



## Audio Detection for Instant Alerts

The audio detection feature enables an event trigger when a sudden, unexpected increase or decrease in sound volume occurs so as to alert users of a possible emergency situation.

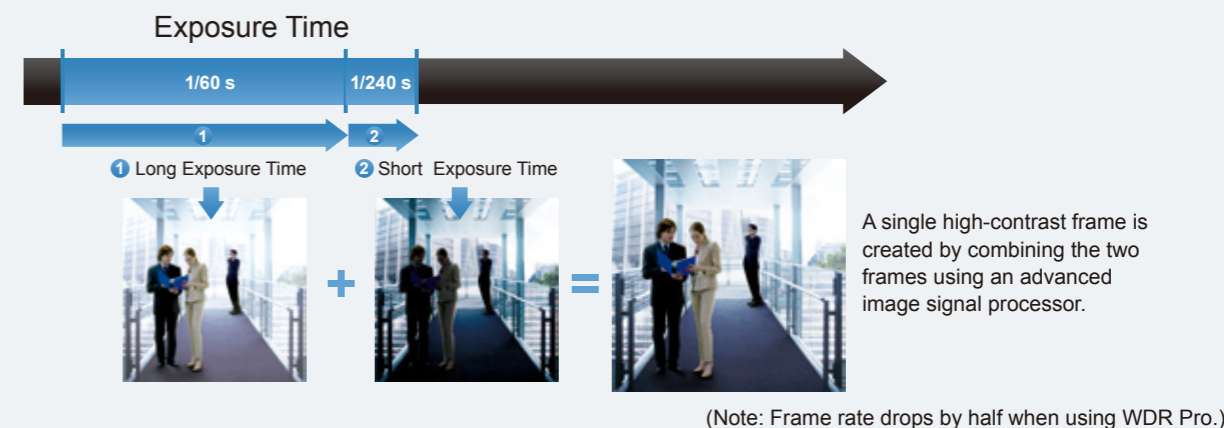


## Unparalleled Visibility in High Contrast Environments

When a camera is used in a high contrast, backlight, glare or light reflective environment, such as a building entrance, ATM or window, an object may appear dark and unrecognizable. WDR (Wide Dynamic Range) technology compensates for the unbalanced lighting, restoring the details throughout the field of view. With this feature, the SD8363E is able to maintain image quality even under challenging light conditions.

### • WDR Pro

WDR Pro works by capturing alternate frames using different exposure times. An image signal processor (ISP) then uses a sophisticated algorithm to seamlessly combine the optimal portions of these two complementary frames to create a composite frame that retains details in both the dark and bright areas of the field of view.



## Extreme Weatherproof

### • Wide Temperature Range

The wide temperature range (-40°C ~ 55°C) enhances the SD8363E's performance and reliability under extremely harsh weather conditions.



### • IP66-rated and NEMA 4X Housing

The weather-proof IP66- and NEMA 4X-rated housing protects the SD8363E from rain, dust, and corrosion, allowing the device to operate outdoors under a multitude of weather conditions.



## SD8363E/63E-M | Speed Dome Network Camera

- 1080p Full HD SONY CMOS Sensor
- 30 fps @ 1080p Full HD
- 60 fps @ 720p HD
- 20x Zoom Lens
- Removable IR-cut Filter for Day & Night Function
- 360° Continuous Pan and 220° Tilt
- Real-time H.264, MPEG-4 and MJPEG Compression (Triple Codec)
- WDR Pro for Unparalleled Visibility in High Contrast Environments
- Weather-proof IP66-rated and NEMA 4X Housing
- -40°C ~ 55°C Wide Temperature Range for Extreme Weather Conditions
- Audio Detection for Instant Alerts
- Auto Tracking for Moving Objects
- Built-in 802.3at Compliant PoE Plus
- 3D Privacy Masks for Additional Protection
- Built-in SD/SDHC/SDXC Card Slot for On-board Storage

