



Mini-Box Network Camera IP8173H



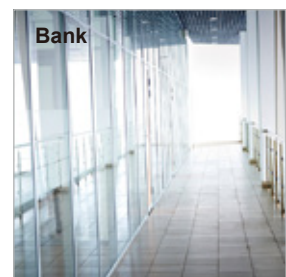
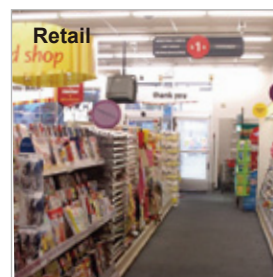
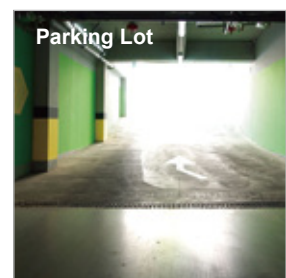
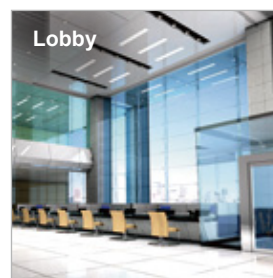
3MP • Compact Size • WDR Pro

VIVOTEK's IP8173H network camera features a 3-Megapixel WDR CMOS sensor to cope with challenging lighting conditions. The WDR feature allows the camera to capture both the dark and bright parts of an image and combine the differences to generate a highly realistic image representative of the original scene, enabling it to provide video quality close to the capabilities of the human eyes. The IP8173H can be widely applied in high contrast environments such as lobby entrances and more. The P-iris lens controls the iris with extreme precision; with its built-in stepper motor, it maintains the iris opening at an optimal level at all times, resulting in superior image clarity and depth of field as well as image quality.

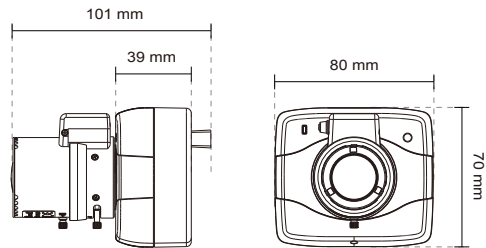
The IP8173H features a mini-box camera design concept with a compact size to fit into different types of enclosures. With the capability to fit to a CS-mount lens, it provides flexible monitoring in all types of environments. With all of these features mentioned above, the camera is the best choice for retail, government, industrial, hotel security and city surveillance.

Features

- 3-Megapixel CMOS Sensor
- 20 fps @ 2048x1536; 30 fps @ 1920x1080
- Vari-focal (f = 2.8 ~ 8 mm), P-iris Lens
- Real-time H.264, MPEG-4 and MJPEG Compression (Triple Codec)
- WDR Pro for Unparalleled Visibility in High Contrast Environments
- Two-way Audio
- Removable IR-cut Filter for Day and Night Function
- Built-in IEEE 802.3af Compliant PoE
- Built-in MicroSD/SDHC/SDXC Card Slot for On-board Storage
- Compact Design



Technical Specifications

System Information		Intelligent Video	
CPU	Multimedia SoC (System-on-Chip)	Video Motion Detection	Triple-window video motion detection
Flash	128 MB	Alarm and Event	
RAM	256 MB	Alarm Triggers	Video motion detection, manual trigger, digital input, periodical trigger, system boot, recording notification, camera tampering detection
Camera Features		Alarm Events	Event notification using HTTP, SMTP, FTP and NAS server File upload via HTTP, SMTP, FTP and NAS server
Image Sensor	1/3" Progressive CMOS	General	
Maximum Resolution	2048x1536	Connectors	RJ-45 for Network/PoE connection Audio input Audio output RS485*1 Digital input*1
Lens Type	Vari-focal	LED Indicator	System power and status indicator
Focal Length	f = 2.8 ~ 8 mm	Power Input	IEEE 802.3af PoE Class 2
Aperture	F1.2 (wide) ~ F1.95 (tele)	Power Consumption	Max. 4.4W
Auto-iris	P-iris	Dimensions	39 mm (D) x 80 mm (W) x 70 mm (H) (body only) 101 mm (D) x 80 mm (W) x 70 mm (H) (with lens)
Field of View	46° ~ 94° (horizontal) 35° ~ 70° (vertical) 58° ~ 113° (diagonal)	Weight	178 g (body only) 246 g (with lens)
Shutter Time	1/5 sec. to 1/32,000 sec.	Safety Certifications	CE, LVD, FCC Class B, VCCI, C-Tick, UL
WDR Technology	WDR Pro	Operating Temperature	0°C ~ 50°C (32°F ~ 122°F)
Day/Night	Removable IR-cut filter for day & night function	Warranty	24 months
Minimum Illumination	0.18 Lux @ F1.2, 50 IRE (Color) 0.001 Lux @ F1.2, 50 IRE (B/W)	System Requirements	
Pan/tilt/zoom Functionalities	ePTZ: 48x digital zoom (4x on IE plug-in, 12x built-in)	Operating System	Microsoft Windows 7/Vista/XP/2000
On-board Storage	MicroSD/SDHC/SDXC card slot	Web Browser	Mozilla Firefox 7~10 (streaming only) Internet Explorer 7.x or 8.x
Video		Other Players	VLC: 1.1.11 or above QuickTime: 7 or above
Compression	H.264, MJPEG & MPEG-4	Included Accessories	
Maximum Frame Rate	H.264: 20 fps at 2048x1536 30 fps at 1920x1080 MPEG-4: 20 fps at 1920x1536 30 fps at 1920x1080 MJPEG: 20 fps at 2048x1536 30 fps at 1920x1080	CD	User's manual, quick installation guide, Installation Wizard 2, free 32-channel VMS ST7501
Maximum Streams	3 simultaneous streams	Others	Quick installation guide, warranty card, lens, camera stand, screw pack
S/N Ratio	Above 50 dB	Dimensions	
Dynamic Range	100 dB		
Video Streaming	Adjustable resolution, quality and bitrate Configurable video cropping for bandwidth saving		
Image Settings	Adjustable image size, quality and bit rate Time stamp, text overlay, flip & mirror Configurable brightness, contrast, saturation, sharpness, white balance, exposure control, gain, backlight compensation, privacy masks Scheduled profile settings		
Audio			
Audio Capability	Audio input/output (full duplex)		
Compression	GSM-AMR, AAC, G.711		
Interface	External microphone input External line output		
Network			
Users	Live viewing for up to 10 clients		
Protocols	IPv4, IPv6, TCP/IP, HTTP, HTTPS, UPnP, RTSP/RTP/RTCP, IGMP, SMTP, FTP, DHCP, NTP, DNS, DDNS, PPPoE, CoS, QoS, SNMP, 802.1X		
Interface	10Base-T/100 BaseTX Ethernet (RJ-45)		
ONVIF	Supported, specification available at www.onvif.org		

Compatible Accessories

Mounting Kits



AE-211

Camera enclosure with fan

AE-232

Camera enclosure with heater and fan

AE-233

Camera enclosure with heater and fan (input AC 24V)

AE2000

Infrared illuminator enclosure (With T bracket)



AE-201

Indoor camera enclosure with transparent cover

AE-202

Indoor camera enclosure with smoke cover



AE-251

Outdoor dome housing with transparent cover

AE-252

Outdoor dome housing with smoke cover

PoE Kits



POE-IJ-1748NDN

PoE injector, 802.3af compliant

All specifications are subject to change without notice. Copyright © 2013 VIVOTEK INC. All rights reserved.

Distributed by:



VIVOTEK INC.

6F, No.192, Lien-Cheng Rd., Chung-Ho, New Taipei City, 235, Taiwan, R.O.C.
| T: +886-2-82455282 | F: +886-2-82455532 | E: sales@vivotek.com

VIVOTEK USA, INC.

2050 Ringwood Avenue, San Jose, CA 95131
| T: 408-773-8686 | F: 408-773-8298 | E: salesusa@vivotek.com

Ver 1.0