



FE9182-H



FE9382-EHV

Fisheye Network Camera



H.265 · 5MP · 360° Surround View · WDR Pro · 360° 20M IR · Smart Stream II · IP66 · IK10 · EN50155

VIVOTEK's FE9182-H and FE9382-EHV are two unique H.265 fisheye fixed dome network cameras, both featuring a detailed 5-Megapixel CMOS sensor that produces superb image clarity. By employing H.265 compression technology and VIVOTEK's Smart Stream II technology, these cameras can reduce both bandwidth and storage consumption by up to 80%* while retaining the highest standard of image quality.

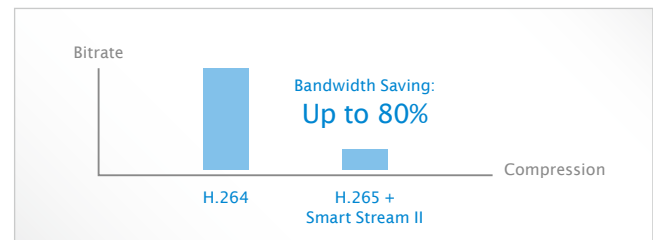
Equipped with a fisheye lens for 180° panoramic view (wall mount) or 360° surround view (ceiling/floor mount) with zero blind spots, the cameras are able to provide coverage of wide, open areas, such as airports, shopping malls, retail stores, offices and more. Further equipped with IR illuminators up to 20 meters, these cameras will maintain surveillance coverage both day and night.

The FE9182-H and the FE9382-EHV are both equipped with a removable IR-cut filter and WDR Pro technology, enabling the cameras to maintain optimal image quality and unparalleled visibility in high contrast lighting environments. Moreover, the FE9382-EHV is designed with full EN50155 compliance, vandal-proof IK10-rated, and weather-proof IP66-rated housing, ensuring that the camera can withstand shock, vibration, humidity, dust, and temperature fluctuations, and maintain stable and reliable video capture during vehicle movement.

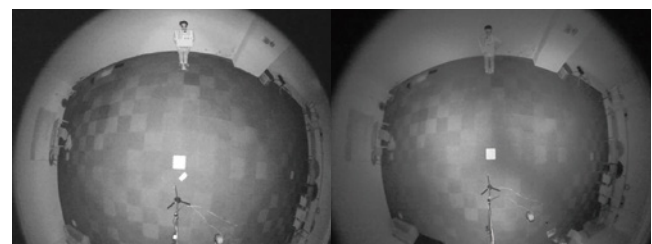
* Depending on scene being monitored.

Key Features

- H.265 Compression Technology
- 5-Megapixel CMOS Sensor
- 30 fps @ 1920x1920
- 1.47 mm Fisheye Lens for 180° Panoramic View and 360° Surround View
- Removable IR-cut Filter for Day & Night Function
- Built-in IR illuminators, effective up to 20 meters
- WDR Pro for Unparalleled Visibility in High Contrast Environments
- Smart Stream II to Optimize Bandwidth Efficiency
- EN50155 Compliance for Professional Mobile Surveillance (FE9382-EHV)
- Vandal-proof IK10-rated and Weather-proof IP66-rated Housing (FE9382-EHV)
- ePTZ for Data Efficiency
- Built-in 802.3af Compliant PoE
- Support Client Side Dewarping
- Pixel Counter for Image Clarity Measurement
- Defog



Combining both H.265 and VIVOTEK Smart Stream II, the camera can reduce bandwidth and storage consumption up to 80% more than cameras using H.264.



IR with High Uniformity

IR with Low Uniformity

Technical Specifications

Model	FE9182-H: 360° 20 m IR, WDR Pro FE9382-EHV: 360° 20 m IR, WDR Pro, IP66, IK10, EN50155, Extreme Weather	Audio Capability	Two-way audio
System Information		Compression	G.711, G.726
CPU	Multimedia SoC (System-on-Chip)	Interface	Built-in microphone External microphone input External line output
Flash	128MB	Effective Range	5 meters
RAM	512MB	Network	
Camera Features		Users	Live viewing for up to 10 clients
Image Sensor	1/1.8" Progressive CMOS in 3096x2094	Protocols	IPv4, IPv6, TCP/IP, HTTP, HTTPS, UPnP, RTSP/RTP/RTCP, IGMP, SMTP, FTP, DHCP, NTP, DNS, DDNS, PPPoE, CoS, QoS, SNMP, 802.1X, UDP, ICMP, ARP, SSL, TLS, NTCIP
Maximum Resolution	1920x1920	Interface	10 Base-T/100 BaseTX Ethernet (RJ-45) *It is highly recommended to use standard CAT5e & CAT6 cables which are compliant with the 3P/ETL standard.
Lens Type	Fixed-focal	ONVIF	Supported, specification available at www.onvif.org
Focal Length	f = 1.47 mm	Intelligent Video	
Aperture	F2.2	Video Motion Detection	Five-window video motion detection
Field of View	180° (Horizontal) 180° (Vertical) 180° (Diagonal)	Alarm and Event	
Shutter Time	1/5 sec. to 1/32,000 sec.	Alarm Triggers	Motion detection, manual trigger, digital input, periodical trigger, system boot, recording notification, camera tampering detection, audio detection
WDR Technology	WDR Pro	Alarm Events	Event notification using digital output, HTTP, SMTP, FTP, NAS server and SD Card File upload via HTTP, SMTP, FTP, NAS server and SD Card
Day/Night	Removable IR-cut filter for day & night function	General	
Minimum Illumination	0.18 Lux @ F2.2 (Color) 0.001 Lux @ F2.2 (B/W)	Connectors	RJ-45 cable connector for Network/PoE connection Audio input*1 Audio output*1 DC 12V power input*1 Digital input*1 Digital output*1
Pan/Tilt/Zoom Functionalities	ePTZ: 48x digital zoom (4x on IE plug-in, 12x built-in)	LED Indicator	System power and status indicator
IR Illuminators	Built-in IR illuminators, effective up to 20 meters 850nm IR LED*6	Power Input	DC 12V IEEE 802.3at PoE Class 4
On-board Storage	Slot type: MicroSD/SDHC/SDXC card slot Seamless Recording	Power Consumption	FE9182-H: Max. 12.95 W FE9382-EHV: Max. 20 W
Video		Dimensions	FE9182-H: Ø 160 x 39 mm FE9382-EHV: Ø 160 x 51 mm
Compression	H.265, H.264, MJPEG	Weight	FE9182-H: 568 g FE9382-EHV: 762 g
Maximum Frame Rate	H.265/H.264: 30 fps @ 1920x1920 MJPEG: 12 fps @ 1920x1920	Casing	FE9382-EHV: Weather-proof IP66-rated housing Vandal-proof IK10-rated metal housing
Maximum Streams	4 simultaneous streams	Safety Certifications	CE, LVD, FCC Class A, VCCI, C-Tick, UL, EN50155 (FE9382-EHV)
S/N Ratio	42.3dB		
Dynamic Range	100dB		
Video Streaming	Adjustable resolution, quality and bitrate; Smart Stream II		
Image Settings	Time stamp, text overlay, flip & mirror; Configurable brightness, contrast, saturation, sharpness, white balance, exposure control, gain, backlight compensation, privacy masks; Scheduled profile settings, 3D noise reduction; Adjustable image size, quality and bit rate, defog; Pixel counter		
Audio			

Technical Specifications

Operating Temperature	<p>FE9182-H: Starting Temperature: 0°C ~ 50°C (32°F ~ 122°F) Working Temperature: -10°C ~ 50°C (14°F ~ 122°F)</p> <p>FE9382-EHV: Starting Temperature: -25°C ~ 55°C (-13°F ~ 131°F) Working Temperature: -40°C ~ 55°C (-40°F ~ 131°F)</p>	Others	Quick installation guide, warranty card, alignment sticker, desiccant bag, screw driver, screws pack, I/O cable, mounting bracket
Humidity	90%	Dimensions	
Warranty	36 months		
System Requirements			
Operating System	Microsoft Windows 8/7/Vista/XP/2000		
Web Browser	Mozilla Firefox 7~43 (Streaming only) Internet Explorer 7/8/9/10/11		
Other Players	VLC: 1.1.11 or above Quicktime: 7 or above		
Included Accessories			

Compatible Accessories

Mounting Kits



AM-114
Pendant head
for outdoor model
(FE9382-EHV)



AM-118
Pendant head
for indoor model
(FE9182-H)



AM-116/AM-117
Pendant pipe
(20cm/40cm)



AM-51C
Adapting plate
for indoor model
(FE9182-H)



AM-520
Mounting adapter