

RP- PE844H

8-P Fast Ethernet Switch, w/ 4-P PoE+



RP-PE844H is a 8 ports Fast Ethernet switch with 4 ports supporting PoE environment. With PoE function, the switch can supplies power to the connected devices via CAT 5 and above twisted cables. By integrating the data transmitting and power supply, it eliminates the effort constructing your network. You could easily connect a Wireless AP or a VoIP phone to this switch without looking outlets for them. In addition, over current protection and circuit shorting protection are also supported to ensure the power supply safety.

RP-PE844H supports plug-and-play without any software to configure and is also fully compliant with all kinds of network protocols. Moreover, its rich diagnostic LEDs on the front-panel provides the clear operating status of individual port and whole system.

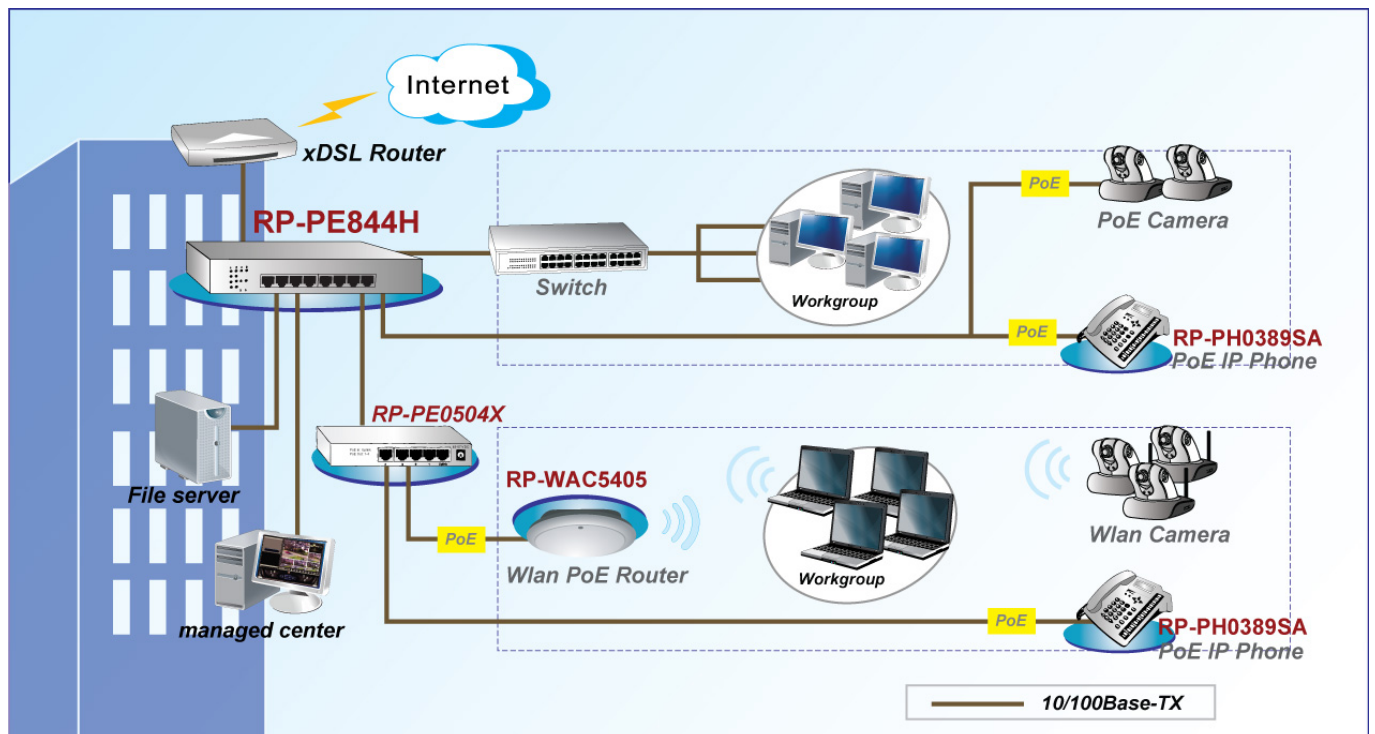
Feature

- Compliant with IEEE802.3af/at
- Deliver Power up to 328ft (100m)
- Plug and Play installation
- Provide 4 PoE ports with classification identify
- Simplified the installation of Ethernet based devices
- Auto Detection and protection of non-standard Ethernet terminal
- Pass Through Data Rates : 8-Port 10/100 Mbps

Specification

Standards	<ul style="list-style-type: none"> • IEEE802.3, IEEE802.3u, IEEE802.3x, • IEEE 802.3at, 802.3af
Interface	<ul style="list-style-type: none"> • 8 * 10/100Mbps RJ-45 Nway ports
Data Transfer Rate	<ul style="list-style-type: none"> • Network speed: 10Mbps and 100Mbps • Duplex mode: Full and Half
Filtering/Forwarding Rate	<ul style="list-style-type: none"> • 10Mbps: 14,880pps/14,880pps • 100Mbps: 148,800pps/148,800pps
PoE Specification	<ul style="list-style-type: none"> • Pin Assignment: 1/2(+), 3/6(-) • Port 1 to 4: 802.3af/at PoE • Output power: Per port 15W / 30W
LED Indicators	<ul style="list-style-type: none"> • AC Power on • Ethernet status Link/Ack • PoE Act/Status
PoE Power Budget	<ul style="list-style-type: none"> • 65W
Power Supply	<ul style="list-style-type: none"> • Internal Power supply 100~240VAC, 50/60 Hz
Environment	<ul style="list-style-type: none"> • Operating temperature : 0°C to 40°C • Operating Humidity:5% to 90% (Non-Condensing)
Dimension	<ul style="list-style-type: none"> • 160 * 266 * 43mm
Certification	<ul style="list-style-type: none"> • FCC, CE, LVD

Application



Ordering information

RP-PE844H 8-P Fast Ethernet Switch, w/ 4-P PoE+