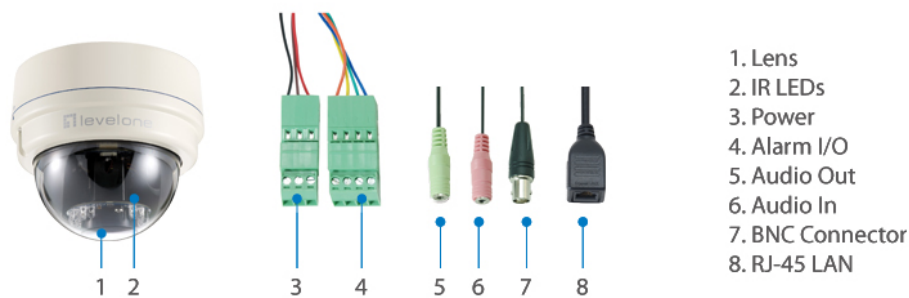




FCS-3081 Version: 3

2-Megapixel Day/Night PoE Dome Network Camera

The LevelOne FCS-3081 is the perfect solution for day/night surveillance projects such as school campuses, railways stations, and parking lot. It features a 2-megapixel Dome network camera with IP66 weatherproof outdoor housing and infrared LEDs (30m). With the assistance of 3DNR (3-Dimension Noise Reduction) and WDR (Wide Dynamic Range), the network camera offers crystal clear image each and every time. It also equipped with a BNC connector for camera to be connected directly to an analog monitor, IR-cut filter, a built-in Micro SD/SDHC card, 10 motion detection zones and also offers a flexible installation with its triple power support (12 VDC/24 VAC/PoE) and 3-axis mechanical design. The FCS-3081 is indisputably the top choice for reliable and high performance surveillance.



Key Features

- 2-Megapixel (1920 x 1080) high-definition resolution
- Built-in infrared LEDs for night viewing up to 30m
- Vandalproof and weatherproof IP66-rated with wide operating temperature (-35 ° C to 50 ° C) for harsh environments
- Features WDR (Wide Dynamic Range) to enhance visibility under extremely bright or dark environments
- Features 3DNR (3-Dimension Noise Reduction) to produce extremely clear picture quality even under low light condition
- 3-axis mechanical design for ceiling/wall mount installation
- Built-in Micro SD/SDHC card slot for local storage
- Digital input/output (1DI/1DO) for sensor and alarm
- BNC connector for analog video output
- Triple power support: 12VDC/24VAC/PoE (IEEE 802.3af)



- Free 64-channel monitoring software included (supports iCamSecure App)

Highlight

Operate Effectively under the Toughest Weather Conditions

LevelOne network cameras are the perfect solution to help you perform surveillance in a severe cold environment. The device has a built-in heater which allows it to operate in temperature as low as -35 degrees Celsius.

Flexible Power Options

Featuring PoE (Power-over-Ethernet) capability, the device receives electrical power using Ethernet cabling from a PoE PSE (Power Sourcing Equipment) device, for instance it could be a PoE switch. Thus providing great cost savings by eliminating the need for additional power cables and outlets. In addition, our camera also supports power 12VDC/24VAC through an optional external power supply in case you don't have a PSE device.

Exceptional Image Quality

With built-in 3DNR (3-Dimension Noise Reduction) and WDR (Wide Dynamic Range) technology, the camera is able to filter the intense backlight surrounding a subject and remove noises from video signal. The result is that an extremely clear and exquisite picture quality can be produced even under any challenging lighting conditions.

Free bundled 64-channel Management Software

We aim to offer you the most versatile and comprehensive surveillance solutions. Our free IP CamSecure software coming allows you to monitor up to 64 IP cameras simultaneously on one screen to enhance scalability. For added convenience and flexibility, the software includes various advanced features such as scheduling recording, event alert, and heaps more. In addition, simply install our free iCamSecure App to your smartphone and connect to the PC with IP CamSecure software installed, you will easily turn your iPhone/Android smartphone into a portable surveillance system for real-time monitoring and snapshot.

Works Well With



FSW-0503
4 FE PoE + 1 FE Switch, 61.6W



NVR-0208
8-CH Network Video Recorder

Specifications

System Specifications

Image Sensor:

2-Megapixel 1/2.7" Progressive Scan CMOS

Connectors and Cabling:

- 1 x RJ-45 10/100 Mbps PoE port
- 1 x 3.5mm line out
- 1 x 3.5mm mic/line in
- 1 x Power terminal block
- 1 x BNC analog video output
- I/O terminal block (1 DI/1 DO)

Modularity:

1 x MicroSD/SDHC card slot

Button:

Reset Button

Indicator:

Link & Act

Lens:

Board lens, vari-focal, f=3 - 9 mm, F1.2

IR Cut Filter:

Removable infrared-cut filter for day & night function

IR LED:

24 IR LEDs for illumination up to 25m

Minimum illumination:

Color: 0.2 lux at F1.2

B/W: 0.02 lux at F1.2

Shutter Time:

1 ~ 1/10,000 sec.

Angle of View (H):

103.5 ° (W) ~ 34.3 ° (T)

Pan/Tilt/Zoom:

8x digital zoom

Video Compression:

H.264 / MJPEG

Resolution:

2M (1920x1080) / SXGA (1280x1024) / 1M (1280x720) / XGA (1024x768) / SVGA(800x600) / D1 (720x480) / VGA (640x480) / CIF (352x240)

Video Format:

AVI

Audio Compression:

G.711 / G.726

Performance

Number of Clients:

20

Data Transfer Rate:

10/100Mbps

Frame Rate:

Up to 15 fps at 1920x1080

Up to 30 fps at 1280x1024

Standards & Protocols

General:

IEEE 802.3 10-BASE-T (Ethernet)

IEEE 802.3u 100-BASE-TX (Fast Ethernet)

IEEE 802.3af Power over Ethernet (PoE)

IPv4/v6, TCP/IP, UDP, RTP, RTSP, HTTP, HTTPS, ICMP, FTP, SMTP, DHCP, PPPoE, UPnP, IGMP, SNMP, QoS

Features

Backup:

MicroSD/SDHC card slot for local storage



IPv6:

IPv4/IPv6 network operation

Video Features

Image Setting:

- Adjustable image size, quality and bit rate
- Configurable brightness, sharpness, contrast, saturation, white balance and exposure
- ACG/AWB/AES
- Back Light Compensation (BLC)
- Wide Dynamic Range (WDR)
- 3D Noise Reduction (3DNR)
- Flip & Mirror
- Portrait Mode
- Privacy Mask
- Time Stamp and Text Caption Overlay

Streaming:

Up to 4 video streams

Motion Detection:

10 Detection Zones

Audio Features

Streaming:

2-way audio

Input/Output:

Mic/line input, line output

Security Features

Alarm and Notification:

Alarm: Motion Detection; Tampering Detection; Network Failure Detection; DI/DO

Notification: HTTP, FTP, SMTP

Encryption:

HTTPS encrypted data transmission

Access Control:

Multi-level user access with password protection

IP address filtering

IEEE 802.1X network access control

Environment

Operating Temperature (° C):

-10 ° C - 50 ° C, powered by DC12V/PoE

-35 ° C - 50 ° C with heater & fan, powered by AC24V

Operating Humidity (Non-condensing):

10% - 90%

Power Specifications

Power Consumption (W):

up to 9W without heater & fan (DC12V/PoE)

up to 25W with heater & fan (AC24V)

Power Input:

DC12V / AC24V / 802.3af PoE

Physical Specifications

Dimensions (W x D x H mm):

151 x 151 x 130 mm

Weight (g):

1350 g

Enclosure:

Weatherproof IP66-rated housing

Metal base and polycarbonate transparent cove

Others

Approval and Compliance:

CE, FCC, ONVIF

Deployment:

Ceiling Mount

Operation Systems:

Microsoft Windows 7/Vista/XP

Viewing System Requirements:

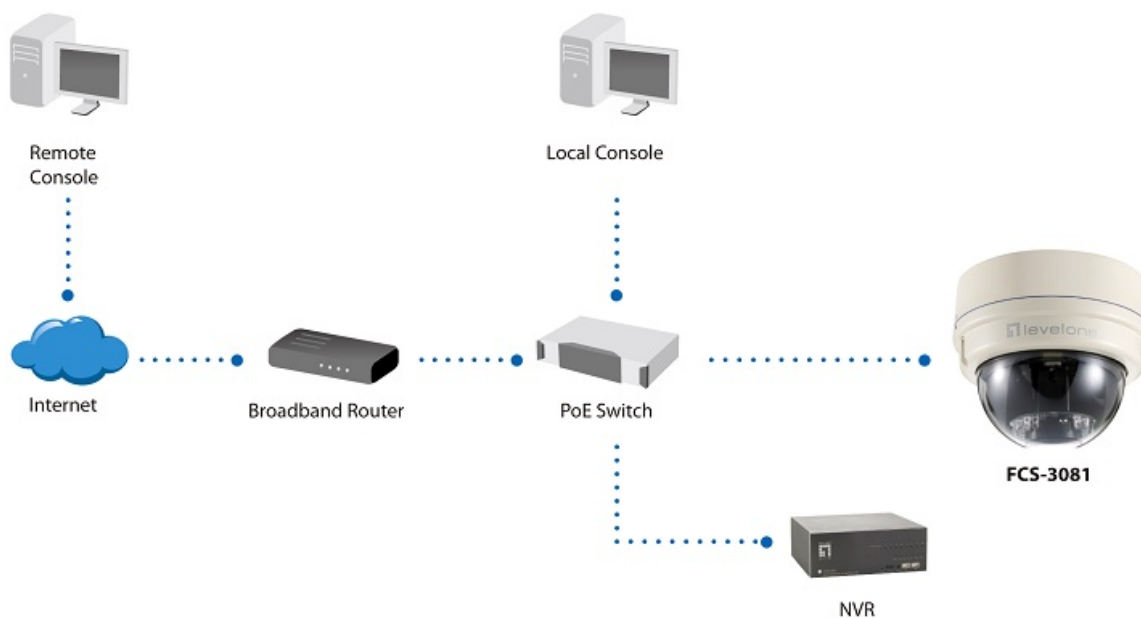
Browser: Internet Explorer 6.x or above, Firefox, Chrome, Safari

Cell phone: 3GPP player

Real Player: 10.5 or above

Quick Time 6.5 or above

Diagram



Order Information

FCS-3081

Package Contents

Power Terminal Block



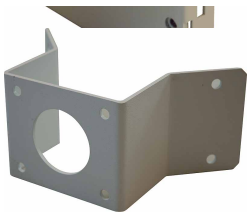
Optional Accessory



CAS-3261



CAS-3000



CAS-3221



CAS-3201



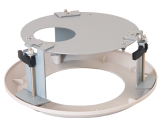
CAS-3242



CAS-3241



CAS-3101



CAS-3100