

# IPCorder KNR-410/KNR-412

## NETWORK VIDEO RECORDER

**IPCorder** is unique standalone Network Video Recorder (NVR) solution for systems with IP cameras, including the latest multimegapixel resolution cameras.

The access to live video, recordings, and device settings is from your internet browser. For viewing you can use computers with Microsoft Windows, Linux and Apple Mac OS operating systems.

True rarity is the largely automated installation of the whole camera system based on **IPCorder**. After insertion of hard drives, **IPCorder** searches your network for available IP cameras and other supported devices and performs automatic setup.

**IPCorder** allows to observe your camera system from anywhere over the Internet. You just need a connection to your **IPCorder's** location and it can automatically enable live view or recordings for remote observation.

**IPCorder** is not only IP camera video recorder, but also a basic automation device. Various network input/output devices, temperature and humidity sensors etc. can be connected too. Using **IPCorder's** Rules you can specify how it should react on events.

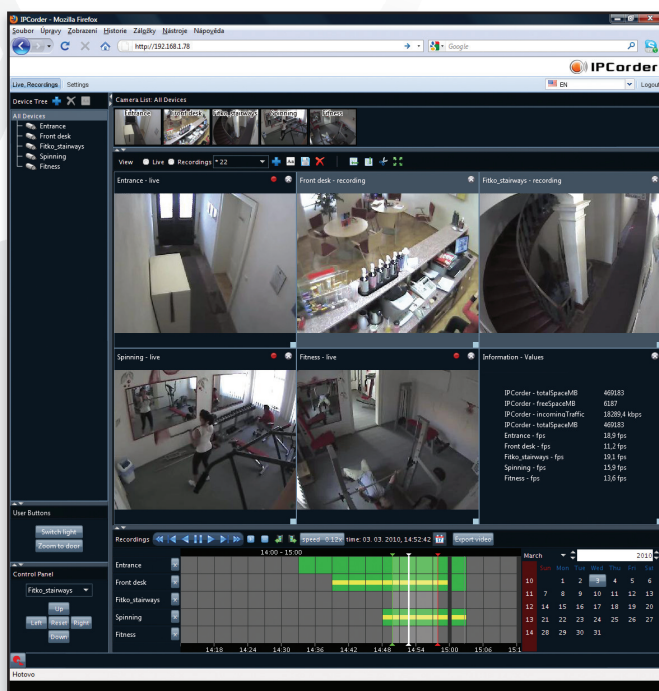
**IPCorder** saves environment and your operating costs as it has very low power consumption compared to a traditional PC based recording solution.



[www.ipcorder.com](http://www.ipcorder.com)



### User Interface



### Key Features

- Standalone Linux based NVR
- Powerful version, recommended for megapixel cameras or large scale systems
- Manage/Record/View up to 24 (KNR-410) or 48 (KNR-412) IP cameras/videoservers simultaneously
- Web based access using Java - supports Microsoft Windows (Internet Explorer, Mozilla Firefox etc.), Linux and Apple Mac OS
- Open solution - support of various IP cameras from different manufacturers
- Easy setup of the unit and connected devices (many tasks done automatically)
- Easy recordings search, playback and export
- Easy remote access from the Internet - Fully automatic or Manual router setup
- Truly Megapixel Ready - up to 5 megapixel cameras supported
- Rule scripting language for programming custom scripts
- Support of I/O devices, values also available for scripting
- 4x SATA I or II hard drive (not included) + 2x eSATA interface
- High stability, no viruses, no spyware
- Compact size and quiet operation
- Low power consumption - green and cost effective solution

### Features

- Simultaneous display of more camera views in user defined matrix
- Unique digital zoom feature with digital pan/tilt
- Search recordings by motion detection or digital input events with date-time interval
- Value/event charts displayed during search
- Display of numerical values from IPCorder, cameras and sensors
- Schedules for recording and Rule limitation
- DHCP/static network configuration
- NTP client for time synchronization
- UPnP Presentation for easy search for IPCorders in network
- Automatic recovery after power outage

### Networking

- 10/100/1000 Mbps

### Interface

- 2x USB (not used)
- 1x IEC 320 C14 power connector

### Storage

- 4x hard drive interface (SATA I or II, tested up to 2 TB capacity each)
- 2x eSATA interface
- Total storage capacity up to 8 TB
- RAID levels: Single disk, RAID 0, 1, 5, 6, 10 and JBOD
- Hard drive(s) not included

### Recording Modes

- Permanent or Pre/Post Event (Motion Detection, DI trigger), both modes can work in defined Schedule

### Remote Access

- Router control - Off, Automatic, Static forwarding

### Supported Cameras/Videoservers

- Up to 24 (KNR-410) or 48 (KNR-412) cameras/videoservers
- Maximum total recommended incoming traffic load is up to 120 Mbps (KNR-410) or 250 Mbps (KNR-412)\*
- In general supported brands are: ACTi, Arecont Vision\*\*, AXIS, D-Link, Dallmeier\*\*, Hikvision\*\*, IQinVision, Linksys\*\*, Lumenera\*\*, Panasonic, Sony, StarDot\*\*, VIVOTEK, Y-Cam
- For a complete list please see: <http://www.ipcorder.com/en/support/supported-devices/>

### Other Supported Devices

- Unlimited number of I/O devices
- KOUKAAM NETIO-230A
- External I/O and sensor (temperature, humidity etc.) devices from company HW Group – Poseidon and Damocles products

### Supported Browsers

- Java based viewing
- Microsoft Windows 32bit: Microsoft Internet Explorer 6.0 and higher, Mozilla Firefox 2.0 and higher
- Linux 32/64bit: Mozilla Firefox 2.0 and higher
- Apple Mac OS X: Safari, Mozilla Firefox

### Dimensions and Weight

- W210 x H115 x D240 mm
- Net weight 4.5 kg

### Power

- 100 – 240 V AC, 50/60 Hz
- Consumption approx. 50 W (incl. HDD)

### Operating Environment

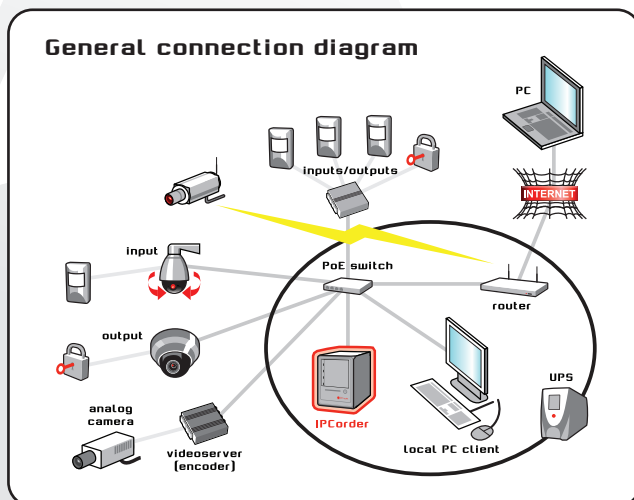
- 0 – 40 °C
- 10 – 90% RH

### Approvals

- CE, FCC, RoHS

### Package Contents

- IPCorder KNR-410 or KNR-412
- Power cable (Schuko type plug)
- Quick Installation Guide, License agreement
- CD with Discover Utility and documentation



### Distributed by:

\*) Approximate values, depends on factors like recording mode, compression type, prerecording length, RAID level used etc.

\*\*\*) Supported in 1.3 firmware version.