

Thank you for purchasing this product. Before you start using it, please read the following instructions which will quickly guide you through the setup process. For more information please refer to the *User manual* available on the enclosed CD or download it from <http://ipcorder.com>.

This guide describes IPCorder KNR-200/202/206. All models differs in the simultaneously supported cameras count:

- **KNR-200:** up to 8 cameras or videoservers
- **KNR-202:** up to 12 cameras or videoservers
- **KNR-206:** up to 16 cameras or videoservers

1. Package contents

Package contains IPCorder, power supply with power cable, network cable, installation CD, disk extensions, installation guide and licence agreement.



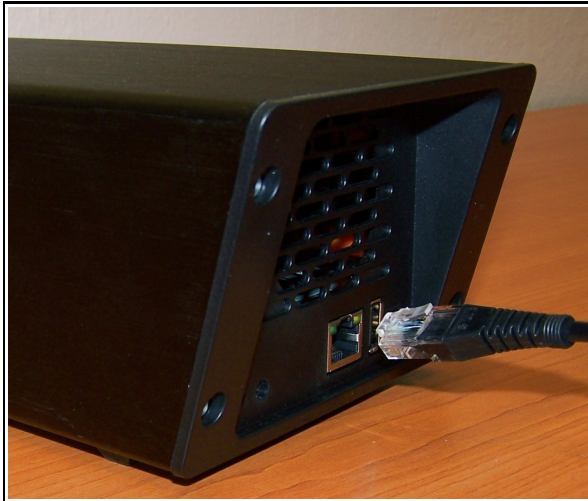
2. How to setup IPCorder in a few minutes

- **Install a SATA or SATA 2 hard drive into the IPCorder:** Unscrew the back cover, attach the unplug-extender and plug disk into the IPCorder. Finally screw the cover back.

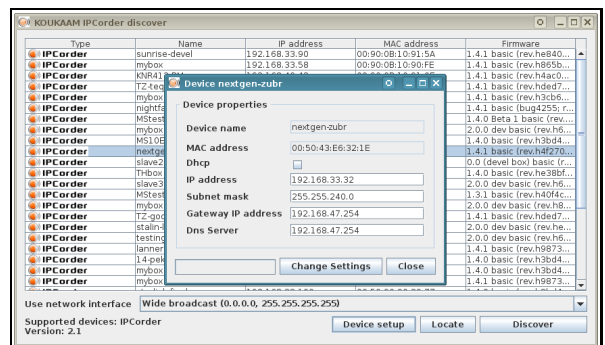
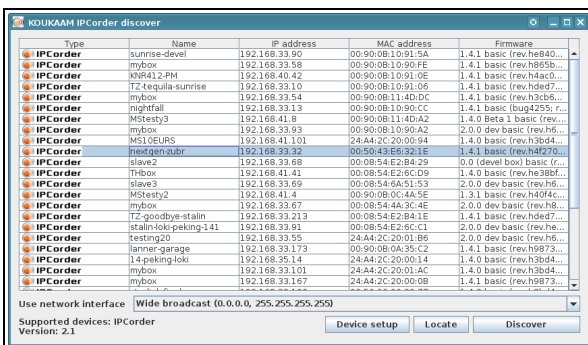


IPCorder KNR-200/202/206

Quick Installation Guide



- Connect the device to the computer network and plug it into an electric outlet.
- On start-up, IPCorder tries to obtain an IP address automatically via DHCP; if unsuccessful, the IP address is set to the default value **192.168.1.78**. If the IPCorder is in the same subnet as the PC used to access it, it should appear in the **Network Devices** folder under Microsoft Windows.
- To obtain the IP address of your IPCorder you can use the **IPCorder Discover** – an application for discovering IPCorder device in your network. You can find it on the supplied CD or download it directly from <http://updates.ipcorder.com>). Windows users can use the file **IPCorderDiscover.exe** for other operation systems it is the file **IPCorderDiscover.jar**. In order for this utility to function it is necessary to have Java SE 5 or newer installed.



- After you start the utility click the **Discover** button and the application will list all IPCorder devices it can access. In the case the utility fails to find your IPCorder, switch off your local personal firewall and/or antivirus. If the IPCorder is running in Rescue mode, you can change network settings by the **Device setup** button. For easier physical localization you can use **Locate** button – red diode (exclamation mark) on IPCorder will start blinking.
- Double click the device you wish to setup in the list of discovered devices and the web interface in **Installation & Rescue mode** will launch in your default internet browser. Select **Set up storage**, wait until

it is finished and then restart to normal mode. *While rescue mode is running, the red exclamation mark on the front panel will blink.*

IPCorder Installation & Rescue Mode		RAID Array Configuration			Go to Main Menu	Restart
RAID array is not configured. You can create it now.						
Tray	Model	Serial Number	Size [GB]	Status	Type	
1	ST31000340SV	unknown	1000	healthy	raid ↕	
2	WD10EARS-00Y5B1	unknown	1000	healthy	raid ↕	
RAID type: raid0 ↕						
Size: 1864 GiB; No redundant drives; No hot spares;						
Create RAID Array						

- After a while you should see the normal login window. Default user name is *admin*, password *admin*.
- After the first login you will see *Configuration Guide* which leads you through basic IPCorder settings. You can also let the IPCorder to find the cameras in your network and setup their recording options. All these actions are accessible via the *Settings* menu.
- For optimal function of IPCorder it is recommended to have latest stable version of firmware installed. Therefore before using IPCorder for the first time it is recommended to check if there is not any newer version of firmware available. The description is available in the *User manual* under *Firmware Upgrade* section.

3. LED signalization and button actions

IPCorder KNR-200/202/206 front panel contains 5 signal LEDs: *Net* lights when a network cable is connected, blinks on network activity. Two *Disk* LEDs blinks on individual disks activity. Signification of *Power* and *Info* LEDs is described in the following table:

status	Power LED	Info LED	short press	long press	very long press
power supply connect	—	—	start	factory reset	—
off	—	—	start	start	—
normal mode	on	off	rescue mode	shutdown	hard shutdown
rescue mode	off	on	normal mode	shutdown	hard shutdown
starting	blinking	off			
found by Discover	on	blinking			
factory reset running	on	fast blinking			

This IPCorder model has only one control button so it recognizes 3 press types. For easier press-type indication there is a *small green LED* at the back cover. On *short press* the LED lights. On pressing for more than 5 seconds the LED starts blinking and signalizes *long press*. If we press the button for a 15 seconds, LED will start to blink faster and signalizes *very long press*.

4. System Requirements

Your system has to meet the minimum system requirements. Otherwise there is no guarantee that the software will work properly:

- **Operating system:** Microsoft Windows 2000, 2003, XP, Vista, 7; Mac OS X 10.4, 10.5 and 10.6; Linux 2.6
- **Internet browser:** Mozilla Firefox 3.5 and higher (3.6 recommended); Mozilla Firefox 3; Internet Explorer 8 (32-bit version only); Internet Explorer 7; Safari 4
- enabled JavaScript a cookies (see the preferences of your web browser)
- **Java:** Java SE 5.0 or higher, latest Java 6 version recommended – available for free download at <http://www.java.com>.
- Hardware configuration: depends on the type and number of connected cameras.

The system allows users to download screenshots from videos as well as entire videos stored on the hard disks. The screenshots are in standard JPEG format and can be viewed in any common graphic viewer. The exported videos can be played using FFDSHow decoding and or a similar filter. The easiest way to watch the videos is to use VLC player, which already contains necessary filters. VLC player is available for free download at <http://www.videolan.org>. FDDShow filter itself can be downloaded for example from <http://www.free-codecs.com/download/FFDshow.htm>.

5. Support

Should you experience any issues with IPCorder, you can report them at <http://issues.ipcorder.com> (available in English only). We take all suggestions seriously, and consider all ideas for improvements in our future releases. Before posting the comment, make sure to upgrade to the latest stable firmware to see whether your problem is not already resolved. If your issue persists, contact the dealer who has sold you the device or directly the technical support of the company KOUKAAM a.s. on the address support@koukaam.se.