



# IPCorder KNR-1004/1008

## Quick Installation Guide

Thank you for purchasing this KOUKAAM product. Before you start using it, please read this installation guide which will quickly guide you through the setup process. For more information please refer to the **User manual** available on the enclosed CD or download it from <http://www.ipcorder.com>. Make sure, that you are using the manual which corresponds to the installed firmware version.

### Important safety instructions

The purchased device works under voltage. If wrongly handled the device could be damaged or cause injury to the person handling the device.

- The manufacturer is not liable for potential damage caused by incorrect usage or placing the device in an unsuitable environment.
- The device is not designed for outdoor use, operational temperature 5 - 40 °C.
- Do not use the device in an environment with strong vibrations.
- Unauthorized modification of this device can damage it or cause a fire.
- Prevent from contact with fluids; do not expose the device to high temperatures.
- Protect the device from falling.
- Do not cover the device. Doing so may cause the device to overheat, which can cause damage to the device.
- It is permitted to use accessories only intended for the device (hard disks, cables, etc.).
- In case of the malfunction of the device, contact your dealer.
- The manufacturer is not liable for damage to the product that is caused by unusual or unforeseeable circumstances (force majeure).

This guide is intended for IPCorder KNR-1004/1008. Individual models differ by the maximum possible number of simultaneously connected cameras or videosevers:

- **KNR-1004:** up to **4** cameras or videosevers
- **KNR-1008:** up to **8** cameras or videosevers

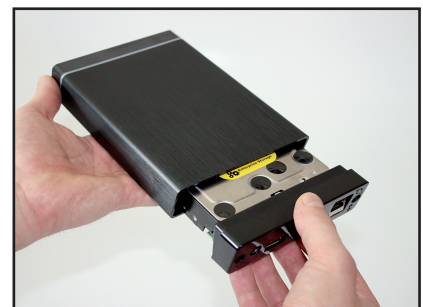
## 1. Package contents

In the package you will find your IPCorder, power adapter 12 V / 2 A, Hex key tool, network cable, an installation CD, the installation guide and licence agreement.



## 2. How to install IPCorder in several minutes

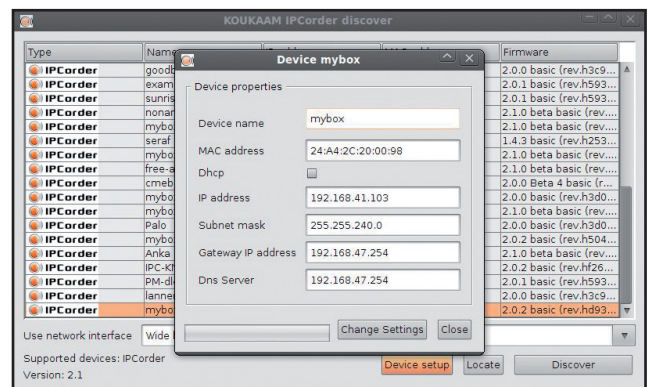
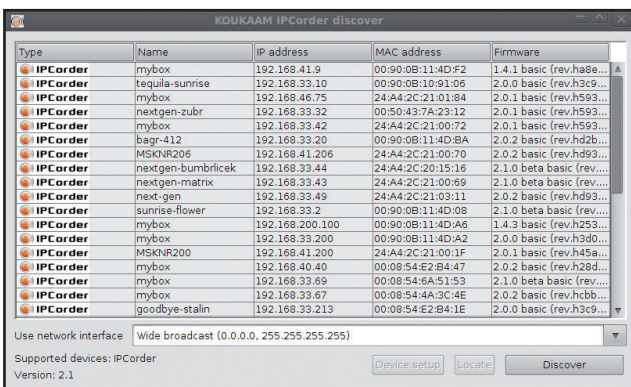
- Install a SATA I, SATA II or SATA III hard drive (with operational power consumption less than 9 W) into the IPCorder KNR-1004/1008.
- Use the following procedure for the Hard drive installation:
  - 1) Unscrew and take off the back panel of the IPCorder.
  - 2) Attach the back panel to the hard drive using the SATA connector.
  - 3) Slide the disk with the connected back panel into the IPCorder and screw tightly.



- Connect the device to the computer network and plug it into a power outlet.



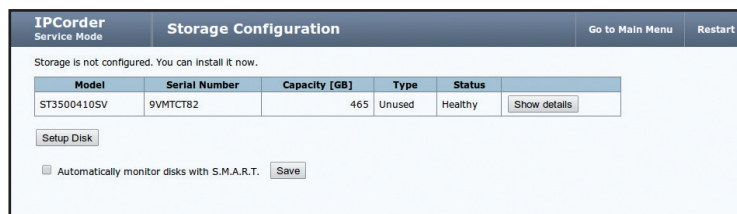
- On start-up IPCorder will attempt to obtain the IP address automatically via DHCP. If unsuccessful it is set up to the default value of **192.168.1.78**. If the IPCorder is in the same subnet as the PC used to access it, it should appear in the **Network Places** folder under Microsoft Windows.
- **IPCorder Discover** – the utility for discovering the IPCorder device in your network - can be used to find the IP address of your IPCorder. You will find this application on the enclosed CD or on the manufacturer's website [www.ipcorder.com](http://www.ipcorder.com). Users of the Windows operating system can use the **IPCorderDiscover.exe** file, other users the **IPCorderDiscover.jar** file. You need to install Java SE version 6 or newer (<http://java.com/en/download>) for the correction function of the Discover program.



- After starting the utility click on the **Discover** button and after a moment the application will find the available device (Discover in progress). If the utility does not find your IPCorder, try to switch off the firewall, or antivirus. If the IPCorder is in Service mode (formerly known as Rescue mode), you can help it by using the button **Device setup** to change the network parameters. In the event that the current IPCorder IP address is not in the same range of the network as the IP address of your computer, or the routing is not setup among those networks, the IPCorder address must be setup in the range of the network of your computer.



- For easier physical localisation of IPCorder you can click on the button **Locate** – a red diode with an exclamation mark symbol will begin to blink on IPCorder.
- Click twice on the required device. The interface of the IPCorder Service mode will be displayed in the default internet browser, this will be indicated by a lit red diode with an exclamation mark symbol.
- You will be asked to setup disk on the **Storage Configuration** screen. After its successful setup, restart to the Normal mode. The Normal mode is indicated when the blue diodes light up. You will find more information about the configuration in the relevant user manual on the enclosed CD.

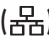

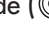



- The login window will shortly appear. The default user account is **admin**, the default password **admin**.
- After the first login the **Configuration Wizard** will appear which will help you with the basic IPCorder settings. Please pay close attention to setting your password and the system time. You can also let IPCorder find the cameras in your network and set up their recording options. All these actions are accessible via the **Settings** menu. You will find more information about the settings in the relevant user manual on the enclosed CD.
- Upgrade the firmware to the latest version for the optimal use of all the IPCorder functions. The on-line upgrade of your IPCorder is available at <http://ipcorder.cz/podpora/ipcorder-firmware/>, where you will also find more information about the latest versions of firmware.

### 3. LED signalization, button actions and acoustic signalization





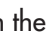
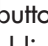

The front panel of IPCorder KNR-1004/1008 contains 4 types of LED diode signals:

- The **Network** Diode (  ) indicates the activity of the network adapter.
- The **Storage** Diode (  ) blinks green if the hard disk is active.
- The blue **Power** Diode (  ) and red **Info** Diode (  ) signals the following:

Status	Power LED	Info LED
Service mode is active	-	on
Normal mode is active	on	-
Found by Discover	on	blinking
IPCorder is starting	blinking	-
IPCorder is switching off	blinking	-

There are 3 types of LED diode signals on the back panel:



- 1) The blue Diode is identical to the front panel **Power** (  ) indication. It also has the role of a **Reset** button (  ) (see below).
- 2) The combined red-green diode:
  - The red Diode is identical to the **Info** Diode (  ) on the front panel.
  - The green Diode indicates the duration of the **Reset** button (  ) activation. The green diode shines when the reset button has been pressed for less than 3 seconds; it blinks when the button has been pressed for a moderately long time and finally it blinks fast when the reset button has been pressed for longer than 15 seconds.
- 3) The combined red-green Diode is identical to the **Storage** Diode (  ) on the front panel.

## Button function description

Button **ON/OFF** (Ⓢ):

- If pressed for less than 3 seconds it will switch off the acoustic signal in defined cases (see below).
- If pressed for more than 5 seconds (accompanied by a short beep) it will switch the device on or off, a running application will end safely.

The **Reset** Button (↻) on the back of IPCorder:

- Pressed for less than 3 seconds it will restart the device from the Normal to the Service mode, if in Service mode it will return to the Normal mode if the Reset Button is pressed again.
- If pressed for more than 25 seconds and the power cable is connected simultaneously the factory settings will restore. We draw attention that in this case all the settings will be irretrievably lost including the saved recordings.
- If pressed for more than 15 seconds the device will be immediately restarted. We wish to point out that in such a case the saved recordings may be damaged.

The acoustic signals are activated in the following situations:

- By a brief sound when the device is switched on or off by pressing the ON/OFF button.
- By a continuous sound if the temperature of the device exceeds 60 °C (it can be switched off by briefly pressing the front ON/OFF button). IPCorder will also e-mail information (if the SMTP is setup) and will make an entry in the log.
- By a continuous sound if the temperature of the device exceeds 70 °C. The device in this case will make an entry in the log, send an information e-mail (if the SMTP is set up) and will be automatically switched off.
- If the temperature limits are exceeded the acoustic signal is accompanied by the blinking of a red light on the lightstrip.

## 4. System Requirements

The system requirements are partly dependent on the version of the installed firmware. The client computer should meet the following minimum requirements for the installed firmware:

- **Operating system:** Microsoft Windows 2003, 2008, XP, Vista, 7 (32 and 64 bit version); Mac OS X 10.5 (only Intel x86), 10.6 and 10.7; Linux 2.6 or newer (recommended JAVA ORACLE co.)
- **Internet browser:** Mozilla Firefox 10 ESR, 14 and newer (recommended); Internet Explorer 8 and 9 (only 32-bit version); Chrome 21 and newer; Safari 5 (only on Mac OS X).
- Enabled JavaScript and Cookies (check the settings of your internet browser).
- Version Java Oracle 6 or newer (always only 32bit version), we recommend Oracle JAVA 7 – freely available for downloading on the website <http://www.java.com>.
- **Hardware configuration:** depends on the type and number of monitored cameras, the minimum recommended is a 2 GHz processor and 1 GB RAM.

IPCoder allows the user to download entire videos and pictures from videos saved on a hard disk. The pictures are in standard JPEG format and can be displayed in every standard picture browser. You need an installed FFDSHOW codec or other similar filter to play a video. The simplest way is to play videos in a VLC player which already contains all the necessary codecs. This is available for free download at <http://www.videolan.org>. The FFDSHOW codec can be downloaded for example from address <http://www.freecodecs.com/download/FFDshow.htm>.

## 5. Support

If the problems continue, contact your vendor, or directly contact the manufacturer's technical support department of KOUKAAM a.s. company at the address [support@koukaam.se](mailto:support@koukaam.se). Before you do so, please check that your IPCorder is equipped with the latest version of firmware (your problem is probably resolved in the new version). We also recommend visiting FAQ at <http://www.ipcorder.com> in the support section where the FAQs are fully answered.

We believe that you will be satisfied with our product. In case of queries or reminders concerning the functionality of IPCorder, please contact us.

The KOUKAAM Team

KOUKAAM a.s.  
Kaplanova 2252/8  
148 00 Praha 4

[www.koukaam.se](http://www.koukaam.se)

[support@koukaam.se](mailto:support@koukaam.se)

The manufacturer bears no responsibility for any technical or printing errors and reserves the right to make any changes in the product and in this User Manual without prior notice. Any such changes shall be announced via the product's website [www.koukaam.se](http://www.koukaam.se).

The manufacturer does not provide warranties of any kind whatsoever with regard to any information given in this user manual or any derived warranties regarding product saleability or its fitness for a specific use.

In particular, the manufacturer does not provide any warranties for defects caused by incorrect use of the product, failure to abide by the instructions and recommendations given in the user manual and for any defects caused by unprofessional activities of third parties outside the manufacturer's authorized service shop.

November 2012

© 2012 KOUKAAM a.s. All rights reserved.