

3Mpx PoE True Day & Night WDR Vandal Dome Network Camera Quick Installation Guide

Thank you for purchasing this product.
Before you use the product, please check the package contents. If any item is missing, contact your dealer of purchase to claim the missing item(s).

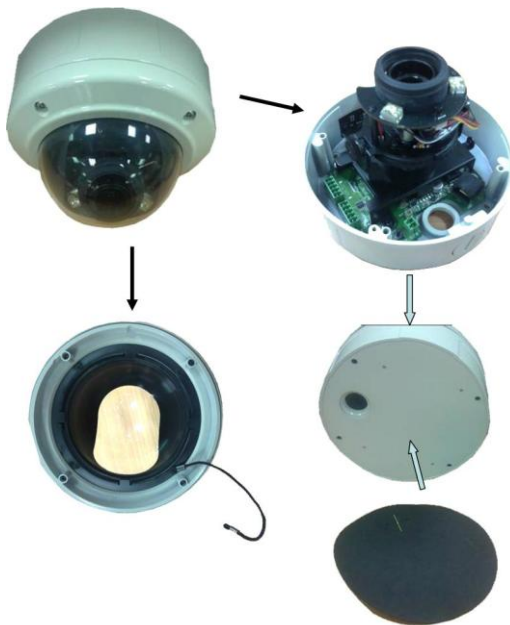
Package Contents:

No.	Description	Quantity
1	Network IP camera	1
2	PU foam pad	1
3	CDROM with user manual, QIG and EdiView 32	1
4	QIG	1
5	Tools package	1
6	Terminal block (2 pins x 1 & 5 pins x 2)	1

Installation of the Network IP Camera

Please follow the instructions below to setup your new IP camera.

1. Attach the front cover using the tool and screws included in the tools package.
2. Attach the PU foam pad onto the bottom of the rear cover.

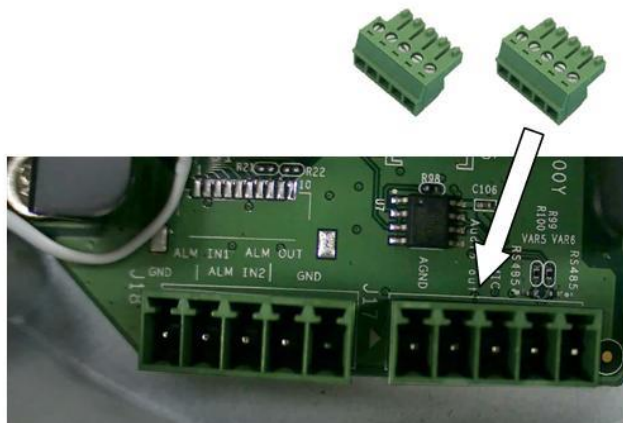


3. Create your GPIO and power cable with the terminal blocks.
4. Please refer to the chart below for definitions of the terminal blocks. The chart is also printed on the

motherboard.

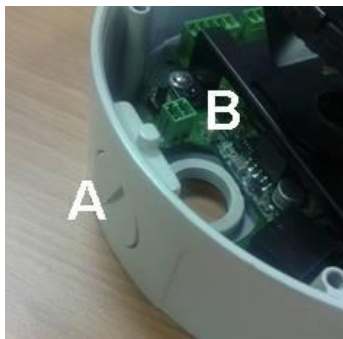
Terminal block definition:

GPIO	J17: 5 pins	J18: 5 pins	Power	J15: 2 pins
Pin No.	Function	Function	Pin No.	Function
Pin 1	AGND	GND	Pin 1	DC 12V
Pin 2	Audio Out	Alarm In 1	Pin 2	GND
Pin 3	Ext MIC In	Alarm In 2		
Pin 4	RS485 D+	Alarm Out		
Pin 5	RS485 D-	GND		





5. Connect all of the cables to their respective terminals. Insert a micro SD/SDHC card (optional): please refer to the chart in chapter 1-1.4 of the user manual for the location.
6. If the camera is connected to a PoE switch then the device can be powered without using the power adapter.
7. Power on the camera and refer to the following chapters for guidance on how to access and configure the camera.
8. When the camera is fully functional, you can mount the camera on a wall or ceiling by using the screw in the tools package.
9. Insert the cables through the conduit hole A or B depending on your preference.



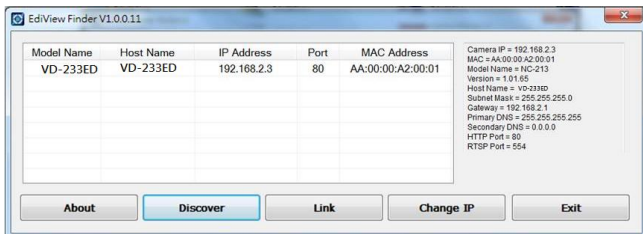
Search for the camera on your network

You can use a web browser to access the network IP camera's user interface (U.I.) and view images from the network IP camera.

The system requirements to view the network IP camera are:

- OS: Microsoft Windows XP/Vista/7
- Browser: IE7, 8, 9 (32Bit)
- Cell phone: 3GPP player

1. Open the utility "EdiViewFinder.exe" from the CD-ROM:
2. Press the "Discover" button to search for all IP cameras on your local network (ensure that all IP cameras are powered on and connected to the local network). When your camera is listed, click "Change IP" to assign an IP address which resides in the same subnet as your PC. Then select the camera and click the "Link" button to access the camera by your web browser.



3. When you are finished, click "Exit" to close the utility.

Access the camera's U.I. and install ActiveX plugin

1. The IP camera's default settings are listed below:

IP address: 192.168.2.3

User name: admin

Password: 1234

You can access the camera directly if your PC resides in the same sub-network. Otherwise, use "IPFinder.exe" to search for the camera and assign an IP address before accessing it.

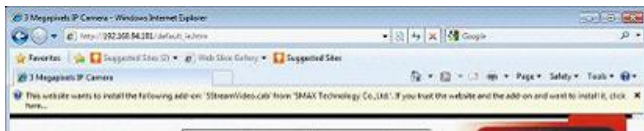
2. Open Internet Explorer and enter the IP address in the URL bar. The user login screen will prompt you for a username and password (admin, 1234):



3. When you access the IP camera for the first time, you'll see the following message prompting that you need to install an ActiveX plugin in order to view the IP camera's video:

This is a pluginactivex. If you see this text, it means either your browser does not support activex or has disabled it.

For IE 8 and earlier versions:



Right click the indication bar and click:
"Install This Add-on for All Users on This Computer..." to

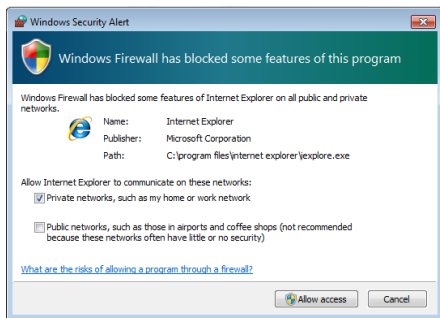
install the ActiveX plugin.

For IE 9, the notification will be displayed at the bottom of Internet Explorer as shown below:

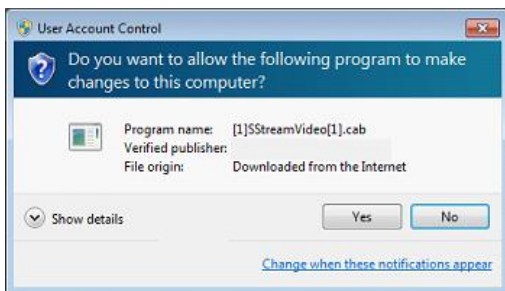


Click "Allow" to install ActiveX plugin.

4. If you see the following message: "Windows Firewall has blocked some features of this program" then please click "Allow access" in order for the IP camera to function properly.



5. You may also be asked that if you want to allow changes to be made to your computer, as shown below. Please click "Yes" to allow changes.



6. After installing the ActiveX plugin, you should be able to see the video stream from the camera. Please refer to the user manual for more detailed instructions.

