

## **H.264 PoE True Day & Night P/T & Fixed Mini Dome Network Camera Quick Installation Guide**

Thank you for purchasing this product. Before you use the product, please check the package contents. If any item is missing, contact your dealer of purchase to claim the missing item(s).

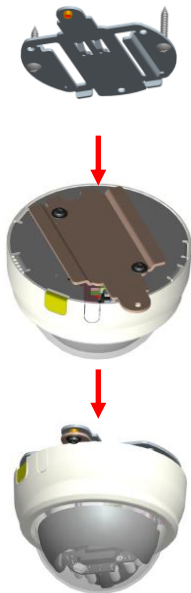
### Package Contents:

No.	Description	Quantity
1	Network IP camera	1
2	Power adapter	1
3	CDROM with user manual, QIG and EdiView 32	1
4	QIG	1
5	Tools package	1
6	RJ45 Female	1

## Installation of the network IP camera

Please follow the instructions below to setup your new network camera.

1. Attach the network camera with the included stand.
2. Place the camera on a ceiling or wall.  
Use screws to fix the network camera to a ceiling or wall.



### 3. Power over Ethernet (PoE)

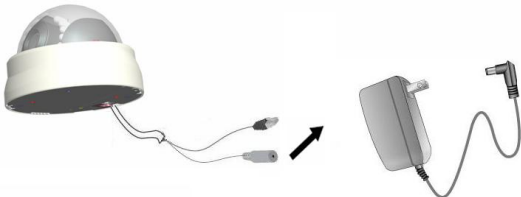
Using a PoE-enabled switch

The network camera is PoE-compliant, allowing transmission of power and data via a single Ethernet cable. Follow the below illustration to connect the network camera to a PoE-enabled switch via Ethernet cable.



### 4. Using a power adapter (Non-PoE)

Use a power adapter to connect the network camera.



## **Search for the camera on your network**

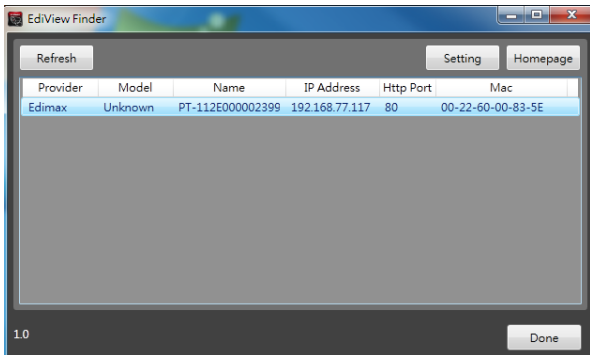
You can use a web browser to access the network IP camera's user interface (U.I.) and view images from the network IP camera.

The system requirements to view the network IP camera are:

- OS: Microsoft Windows XP/Vista/7
- Browser: IE7, 8, 9 (32Bit)
- Cell phone: 3GPP player

1. Open the utility "EdiView Finder.exe" from the CD-ROM:
2. Press the "Refresh" button to search for all IP cameras on your local network (ensure that all IP cameras are powered on and connected to the local network). When your camera is listed, click "Change IP" to assign an IP address which resides in the same subnet as your PC. Then select the camera and click the "Link" button to

access the camera by your web browser.



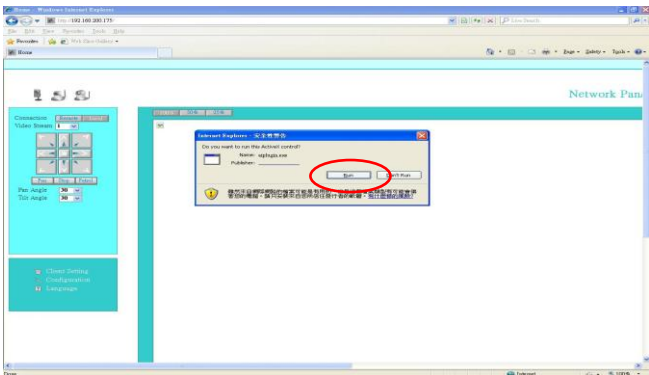
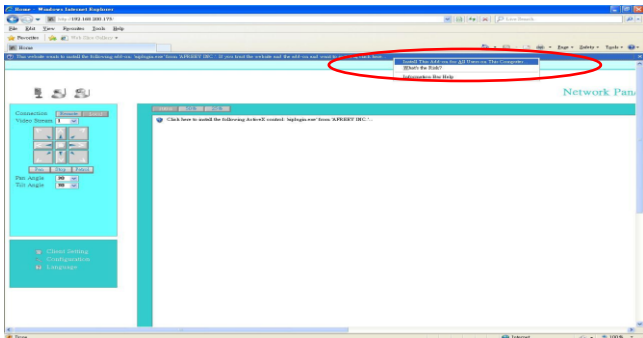
3. When you are finished, click “Done” to close the utility.

### **Access the camera’s U.I. and install ActiveX plugin**

For initial access to the network camera in Windows, your web browser may prompt for permission to install a new plug-in for the network camera. This plug-in has been registered for certification and is used to display the video in the browser. Users may

click on  to proceed.

## Click “Install” and “Run” ActiveX controls



# The video will be displayed

Network Pan/Tilt Camera

Connection: Remote Local

Video Stream: 1

Pan: 30

Tilt: 30

- ePTZ Setting
- Client Setting
- Configuration
- Language

Network Pan/Tilt Camera 2012-02-06 16:45:32

gretagmacth ColorChecker™ Color Rendition Chart

Go to: Select one



## Declaration of Conformity

We, Edimax Technology Co., Ltd., declare under our sole responsibility, that the equipment described below complies with the requirements of the European EMC directive (2004/108/EC).

**Equipment:** PoE Mini PT/Fixed Dome Network Camera

**Model No.:** PT-112E; PT-111E; MD-111E

**Report No.:** NEI-EMC-1-1308221

The following European standards for essential requirements have been followed:

**EN 55022: 2010 Class B**

**EN 55024: 2010**

**EN61000-3-2: 2006+A1: 2009+A2: 2009 Class A**

**EN61000-3-3: 2008**

Edimax Technology Co., Ltd  
No. 3, Wu Chuan 3<sup>rd</sup> Road,  
Wu-Ku Industrial Park,  
New Taipei City, Taiwan

Date of Signature: August, 27, 2013

Signature:



Printed Name:

Albert Chang

Title:

Director

Edimax Technology Co., Ltd.

