

# **Megapixel IP Cube Camera ACM-4200**

**Ver. 090730**

## **Quick Installation Guide**



[www.acti.com](http://www.acti.com)

# 1

## Getting Started

### 1.1 PACKAGE CONTENTS

ACM-4200 series



Power Adaptor (Option)



Product CD



Camera Stand



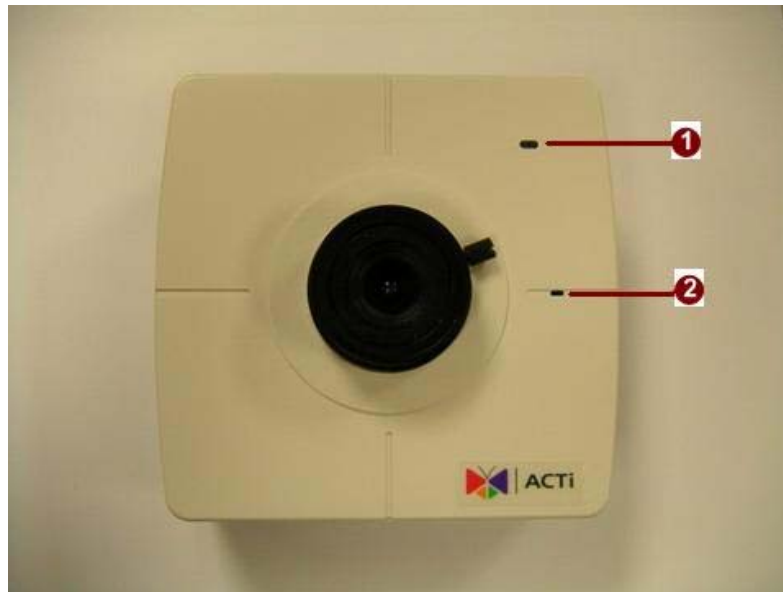
Warranty Card



Accessory



## 1.2 PHYSICAL DESCRIPTION



### 1. Action LED Indicator

The LED will light up after IP camera has successfully completed the boot process

### 2. Built-in Microphone

Sensitivity:  $-42\text{dB} \pm 3\text{dB}$  ( $0\text{dB}=1\text{V/Pa}$  at  $1\text{KHz}$ )

S/N Ratio: More than  $58\text{dB}$

Directivity: Omni-directional



3. **Power Input**

Please use power supply of input DC 3.3V only.

4. **Reset Button**

**Step 1:** Switch off IP device by disconnecting the power cable

**Step 2:** Press and continue to hold the Reset Button. Reconnect the power cable while continuing to hold the reset button.

**Step 3:** Keep holding the reset button depressed around 6 seconds, then release the reset button. The unit will start up with factory default settings.

5. **Audio Output**

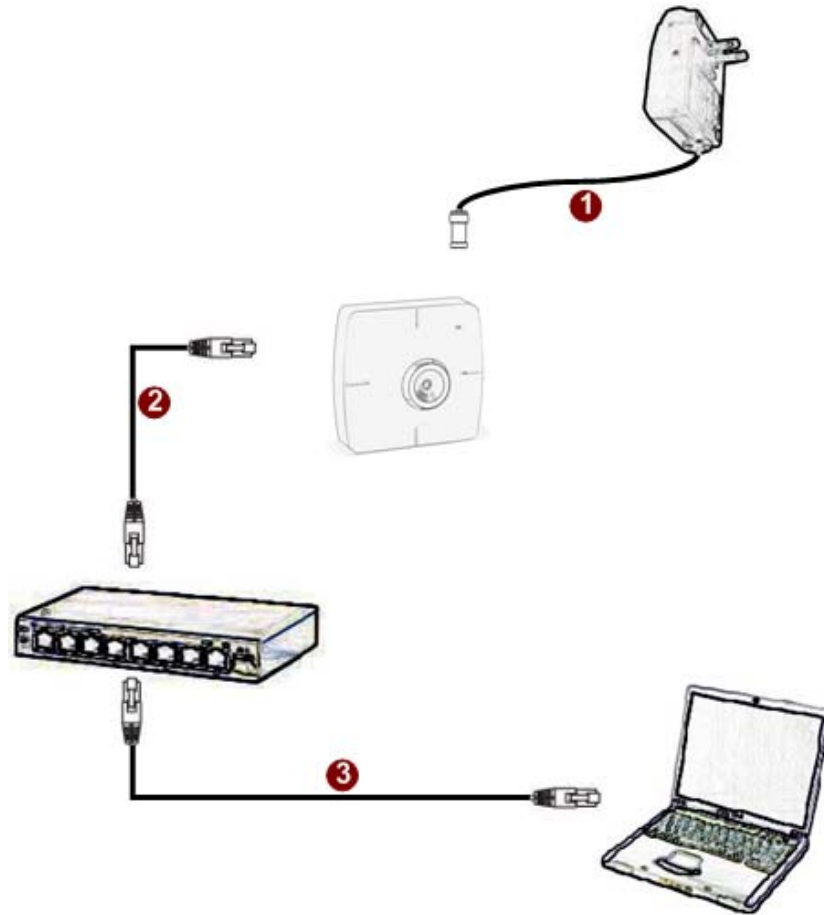
The IP device supports audio output with earphone jack

6. **Ethernet Port**

The IP device connects to the Ethernet via a standard RJ45 connector. Supporting NWAY, this IP device can auto detect the speed of local network segment (10Base-T/100Base-TX Ethernet).

## 1.3 BASIC CONNECTIONS

Follow the procedures below to connect the IP device to the respective apparatuses.



1. Connect the power adaptor to IP device
2. Connect IP device's ethernet port to an Ethernet (RJ45 connectors). If your IP device has PoE built-in, you can regard it as a PD and connect it directly to a PSE device like PoE switch.
3. Connect a PC to the Ethernet hub (RJ45 connectors)



**NOTE:** You may find a support package for help you getting familiar with PoE. Please visit our web site, and get the support document TS-00040.

# 2

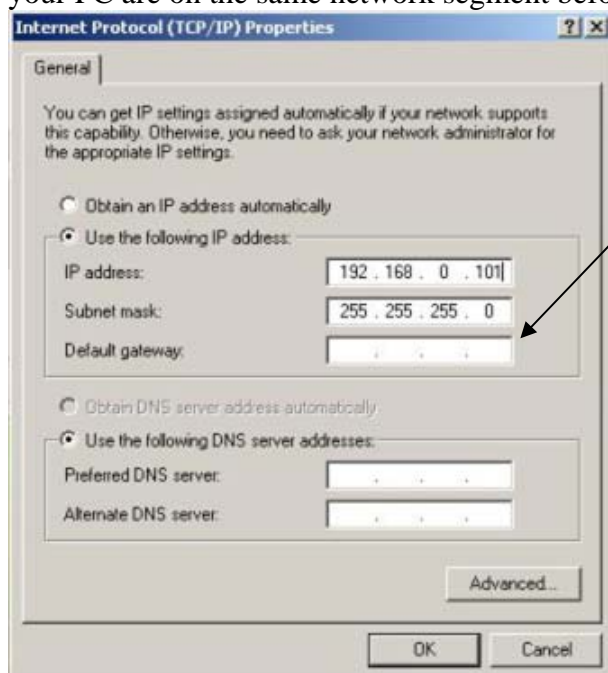
## Quick Tour

This section guides you with a quick tour on this IP device.

### 2.1 Configure this IP Device

#### 2.1.1 Make sure network environment

Default IP of this IP device is 192.168.0.100. Please make sure this IP device and your PC are on the same network segment before running the installation.



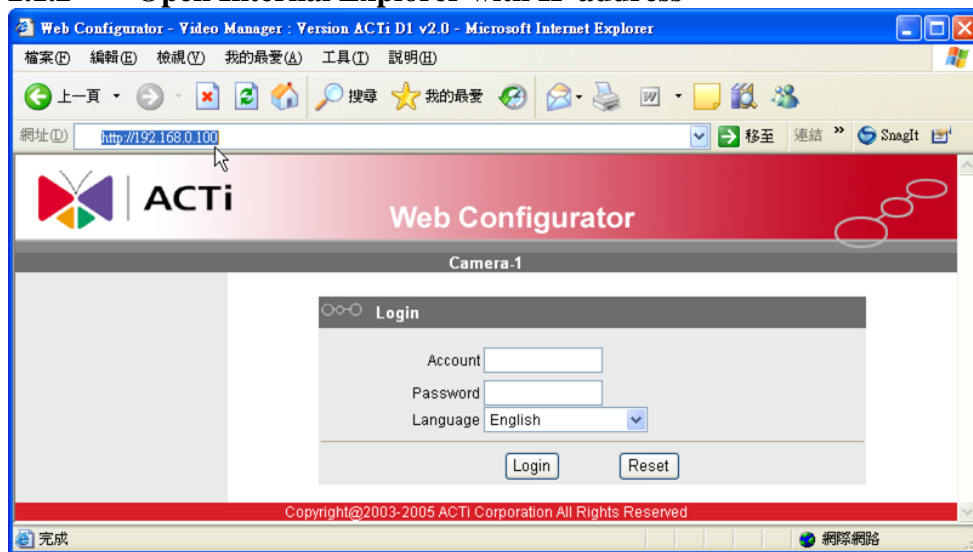
Please set the settings as below.

IP address: 192.168. 0.xxx

Subnet mask: 255.255.255. 0

(NOTE: xxx should be a number from 1 to 254, but 100 is excepted.)

### 2.1.2 Open Internal Explorer with IP address

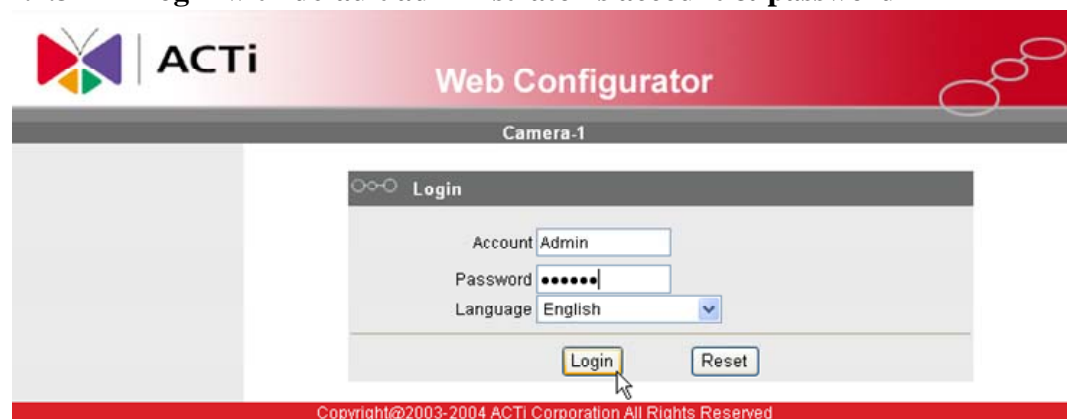


**NOTE:** If your web browser is earlier than IE6, then download IE6 is recommended.



**NOTE:** This IP device default IP address is set to 192.168.0.100

### 2.1.3 Login with default administrator's account & password



**NOTE:** Default administrator account is set to **Admin**, password is set to **123456**, and click **Login** button.

### 2.1.4 Preview the video



### 2.1.5 Set the new IP address







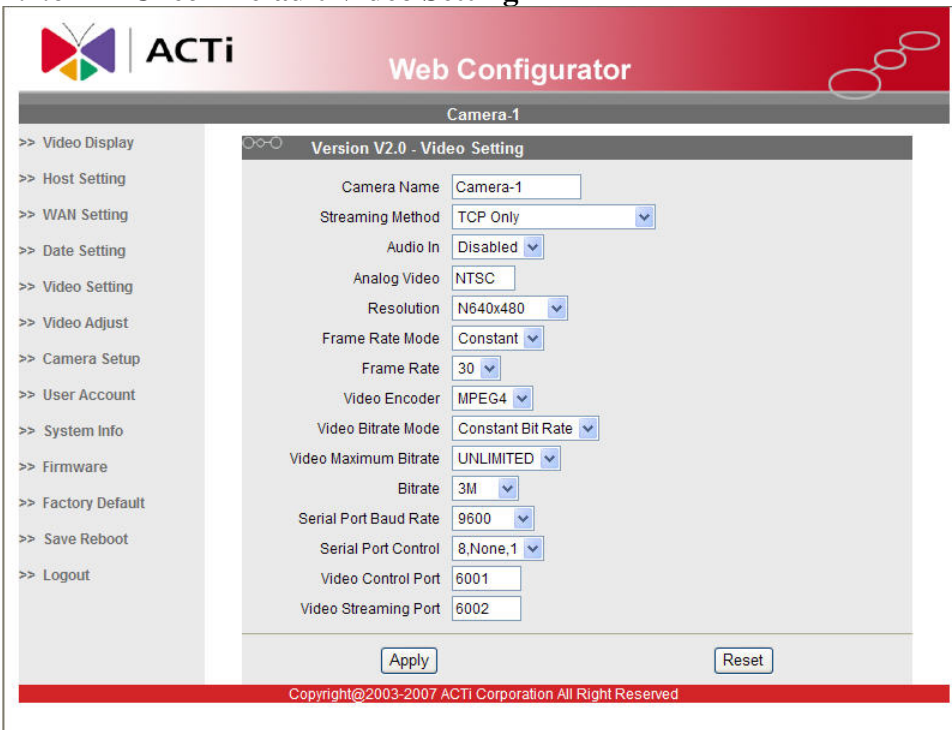
\***IP Address** : The default IP address is 192.168.0.100.



\***Subnet Mask** : The default subnet mask is 255.255.255.0

\*Click  button

	<b>NOTE:</b> In your Client PC, please make sure the setting of Network Connections Type is set to Auto Negotiation, since this IP device follows MII standard. Otherwise, you might not see the live image.
	<b>IMPORTANT:</b> After the IP address is changed, please record this IP address. There's no way to connect to the IP device if user forgets the new IP address.

### 2.1.6 Check Default Video Setting



	<b>NOTE:</b> Please make sure the TV Input (NTSC / PAL) is meet your requirement, and click  button.
---	---

2.1.7 Click **Save Reboot** to restore all settings and please wait about 30 seconds for system reboot.