



## **Network Camera IP7137**

---

### **Quick Installation Guide**

This guide describes the basic functions of IP7137. All detailed information is described in the user's manual.

6F., No. 192, Lien-Cheng Rd., Chung-Ho, Taipei County, Taiwan  
Tel: +886-2-8245-5282 Fax: +886-2-8245-5532  
E-mail: [sales@vivotek.com](mailto:sales@vivotek.com) <http://www.vivotek.com>



## Warning Before Install

- Power off the Network Camera as soon as it is found smoking or smelt unusual.
- Keep the Network Camera away from the water. If the Network Camera is wet, power off immediately.

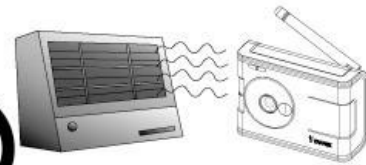


Contact your distributor when such cases happen.

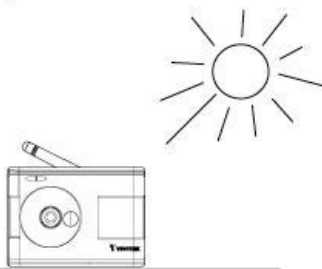


Contact your distributor when such cases happen.

- Do not place the Network Camera around the heat sources, such as television or oven.
- Refer to your user's manual for the operating temperature.



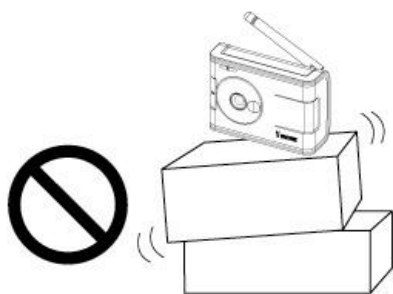
- Keep the Network Camera away from the direct sunlight.



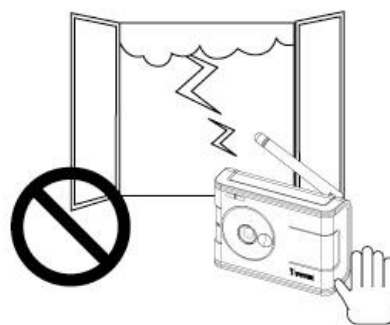
- Do not place the Network Camera in high humid environments.



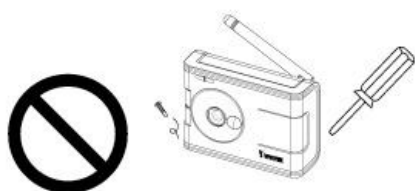
- Do not place the Network Camera on unsteady surfaces.



- Do not touch the Network Camera when it's lightning.



- Do not disassemble the Network Camera.



- Do not drop the Network Camera.



- Do not insert any object into the Network Camera, such as needles.



# 1 Check Package Contents

● IP7137



● Power Adapter



● Camera Stand



● Software CD



● Quick Installation Guide

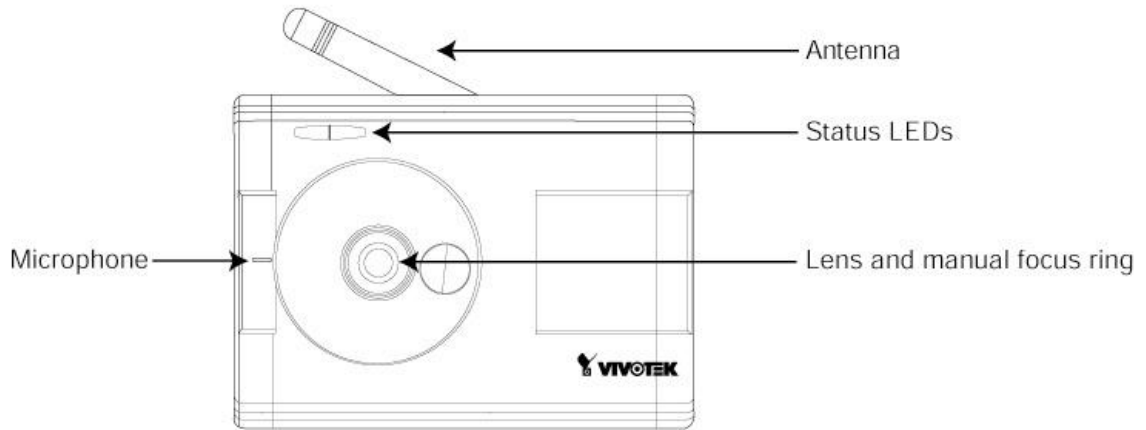


● Warranty Card

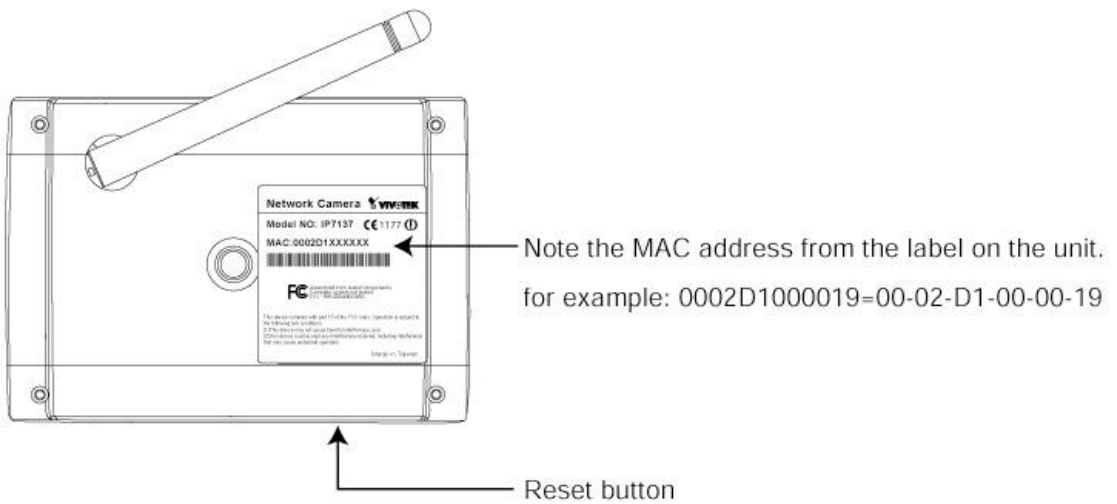


## 2 Physical Description

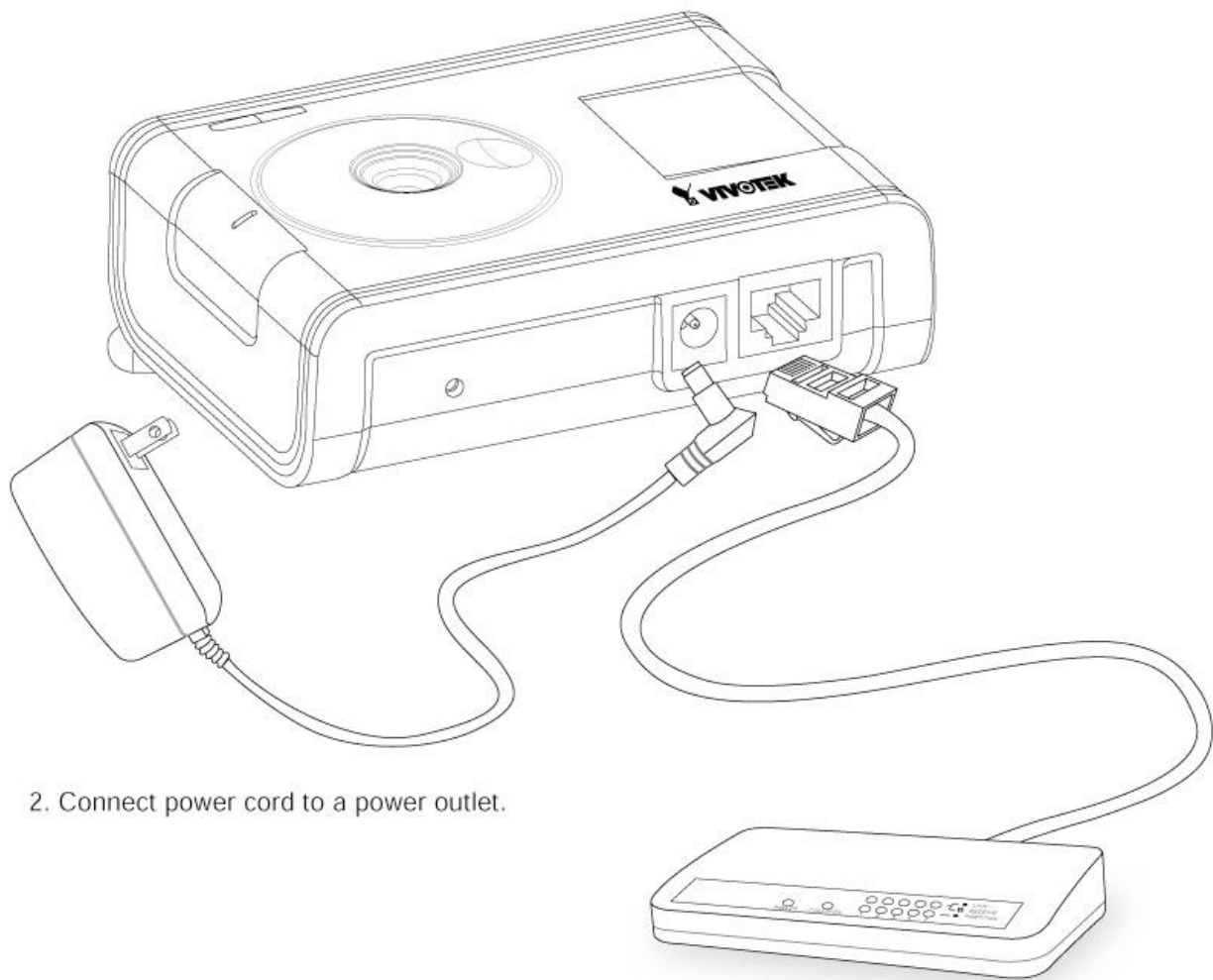
### ● Front Panel



### ● Rear Panel



### 3 Install Your Network Camera in Ethernet Network



2. Connect power cord to a power outlet.

1. Use Ethernet cable to make connection from Ethernet port to the hub.

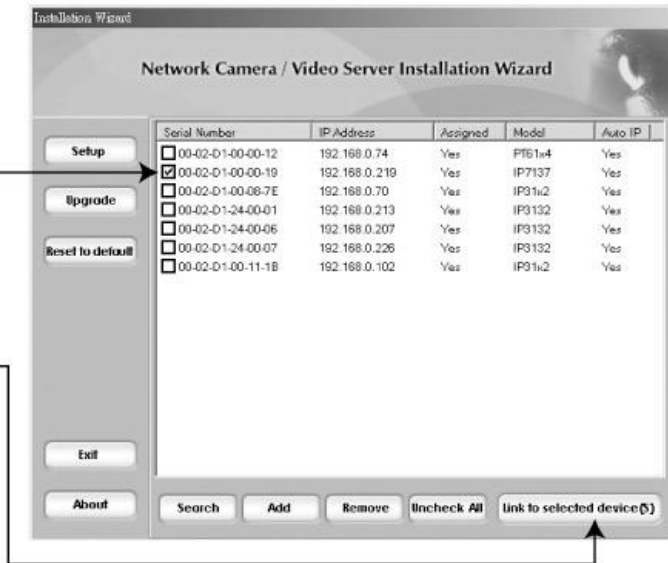
\*Use Category 5 Cross Cable when the Network Camera is directly connected to PC.

## 4 Assign IP Address

1. Run the "Installation Wizard" under the Software Utility directory from software CD.
2. The program will search the servers or cameras on the same LAN.



3. After searching, the main installer window will pop up. Click on serial number that matches the one you just noted from **2 Physical description**



4. Click "Link to selected device(s)" to connect the Internet Explorer to the Network Camera.

## 5 The Internet Explorer Connects to the Network Camera



## 6

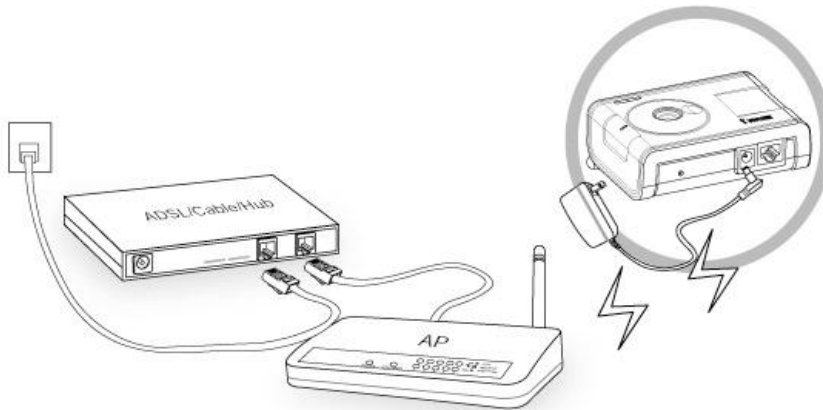
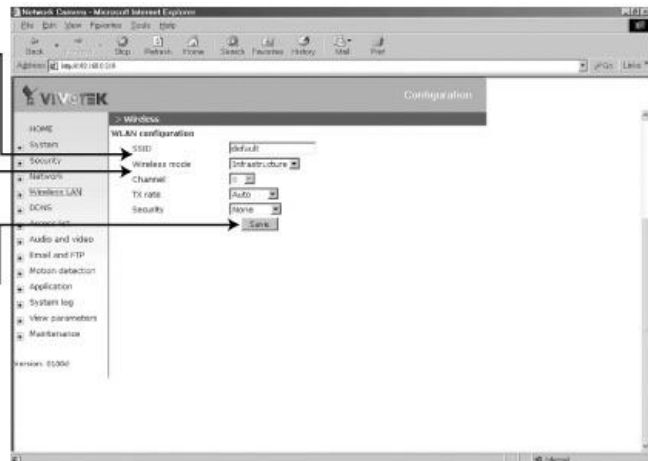
## Set up Your Wireless Configuration for the Network Camera

1. Check the SSID currently set on your wireless access point (AP).
2. Go to IP7137's **Configuration > Wireless LAN**

3. Type in the SSID consistent with the setting on your AP.

4. Select the Wireless mode as "Infrastructure".

5. Click **Save**



### Note:

1. SSID abbreviated from Service Set Identifier is the name assigned to the wireless network. The IP7137's factory SSID setting is set to "default".
2. Select "Ad-Hoc" wireless mode if you want the IP7137 to communicate without using an AP or wireless router.

For setup further configuration, please check user's manual on the software CD.