



# IPcorder KRR-4016/24/32/40 Quick Installation Guide

Thank you for purchasing this KOUKAAM product. Before you start using it, please read this installation guide which will quickly guide you through the setup process. For more information please refer to the *User manual* available on the enclosed CD or download it from <http://www.ipcorder.com>.

## Important safety instructions

The purchased device works under voltage. If wrongly handled the device could be damaged or cause injury to the person handling the device.

- The manufacturer is not liable for potential damage caused by incorrect usage or placing the device in an unsuitable environment.
- The device is not designed for outdoor use.
- Do not use the device in an environment with strong vibrations.
- Unauthorized modification of this device can damage it or cause a fire.
- Prevent from contact with fluids; do not expose the device to high temperatures.
- Protect the device from falling.
- Do not cover the device. Doing so may cause the device to overheat, which can cause damage to the device.
- It is permitted to use accessories only intended for the device (hard disks, cables, etc.).
- In case of the malfunction of the device, contact your dealer.
- The manufacturer is not liable for damage to the product that is caused by unusual or unforeseeable circumstances (force majeure).

This guide is intended for IPcorder KRR-4016/4024/4032/4040. Individual models differ by the maximum possible number of simultaneously connected cameras or videosevers:

- **KRR-4016:** up to **16** cameras or videosevers
- **KRR-4024:** up to **24** cameras or videosevers
- **KRR-4032:** up to **32** cameras or videosevers
- **KRR-4040:** up to **40** cameras or videosevers

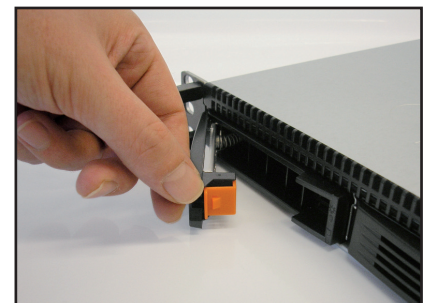
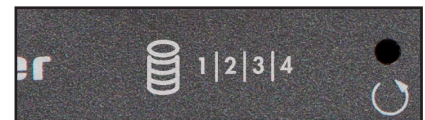
## 1. Package contents

In the package you will find your IPCorder, power cable, network cable, an installation CD, the installation guide and license agreement.

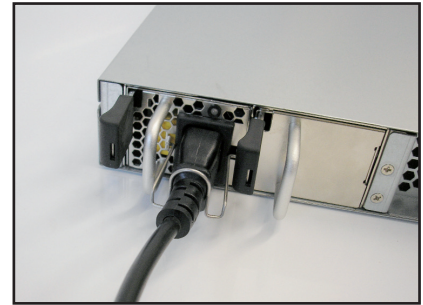
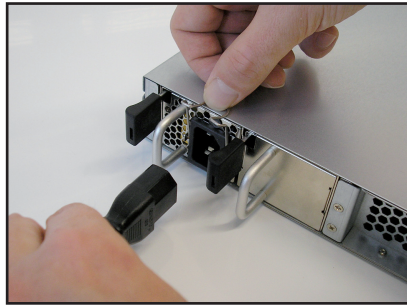


## 2. How to set up IPCorder in a few minutes

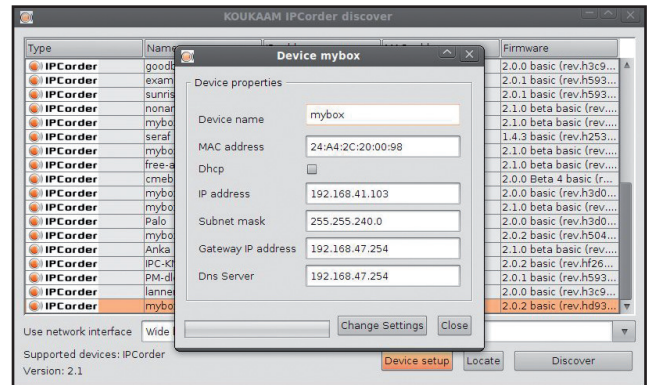
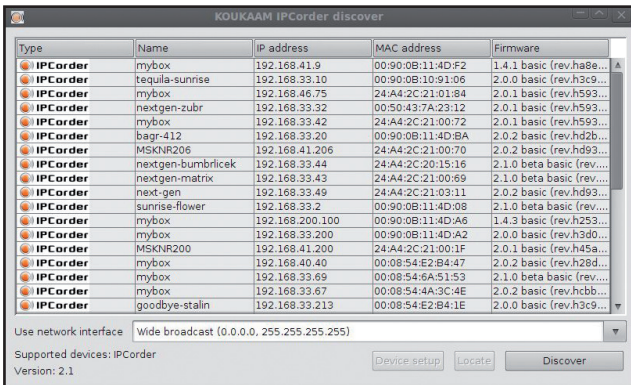
- Install your IPCorder to a 19" rack and place it to a free 1U position.
- Up to four 3.5 inch SATA I, SATA II or SATA III disks (in various combination) can be inserted in the IPCorder KRR-4016/4024/4032/4040, the individual positions are numbered as follows:
- Use the following procedure for the installation of hard disks:
  - 1) Release the safety lock of the box and take it out.
  - 2) Screw the disk to the box.
  - 3) Insert the box with the disk back into your IPCorder and secure the safety lock.



- Connect the device to the computer network - use network adapter number 1 (see. Redundant Network Connection).
- Plug the device into an electric outlet.

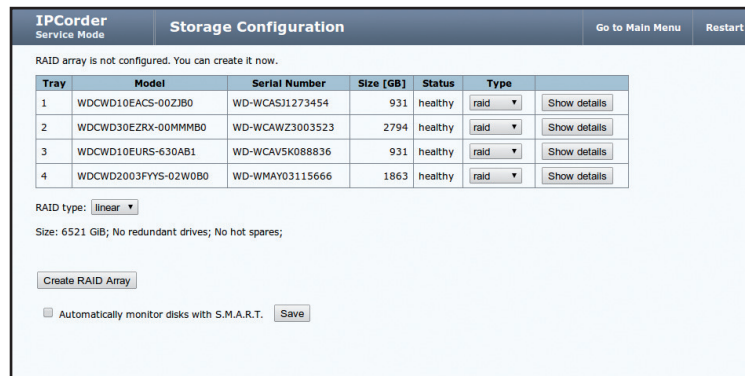


- On start-up IPCorder will attempt to obtain the IP address automatically via DHCP. If unsuccessful it is set up to the default value of **192.168.1.78**. If the IPCorder is in the same subnet as the PC used to access it, it should appear in the **Network Places** folder under Microsoft Windows.
- **IPCorder Discover** – the utility for discovering the IPCorder device in your network - can be used to find the IP address of your IPCorder. You will find this application on the enclosed CD or on the manufacturer's website <http://www.ipcorder.com>. Users of the Windows operating system can use the **IPCorderDiscover.exe** file, other users the **IPCorderDiscover.jar** file. You need to install Java SE version 6 or newer (<http://java.com/en/download>) for the correction function of the Discover program.



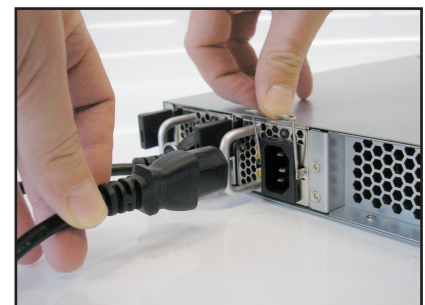
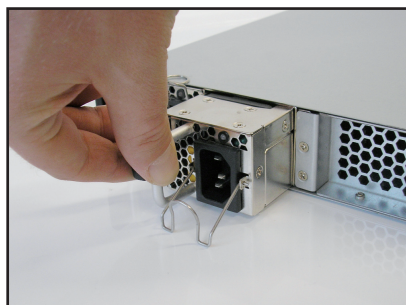
- After starting the utility click on the **Discover** button and after a moment (Discover in progress) the application will find the available device. If the utility does not find your IPCorder, try to switch off the firewall, or anti-virus. If the IPCorder is in Service mode (formerly known as Rescue mode), you can help it by using the button **Device setup** to change the network parameters. In the event that the current IPCorder IP address is not in the same range of the network as the IP address of your computer, or the routing is not setup among those networks, the IPCorder address must be setup in the range of the network of your computer.
- For easier physical localization of IPCorder you can click on the button **Locate** – a red diode with an exclamation mark symbol will begin to blink on IPCorder.

- Click twice on the required device. The interface of the IPCorder Service mode will be displayed in the default Internet browser, this will be indicated by a lit red diode with an exclamation mark symbol.
- You will be asked to configure the RAID array on the **Storage Configuration** bscreen. After its successful creation, restart to the Normal mode.



- The Normal mode is indicated when the blue diodes light up. You will find more information about the configuration in the relevant user manual on the enclosed CD.
- The login window will shortly appear. The default user account is **admin**, the default password **admin**.
- After the first login the **Configuration Wizard** will appear which will help you with the basic IPCorder settings. Please pay close attention to setting your password and the system time. You can also let IPCorder find the cameras in your network and set up their recording options. All these actions are accessible via the **Settings** menu. You will find more information about the settings in the relevant user manual on the enclosed CD.
- To ensure higher reliability, IPCorder KRR-4016/4024/4032/4040 can be equipped with additional power supply (not included with the IPCorder). To install the additional power supply:

- 1) Turn off your IPCorder and unplug it from the power supply.
- 2) Take off the cover of the slot for the additional power supply.
- 3) Insert the additional power supply.
- 4) Connect power cables to both power supplies.



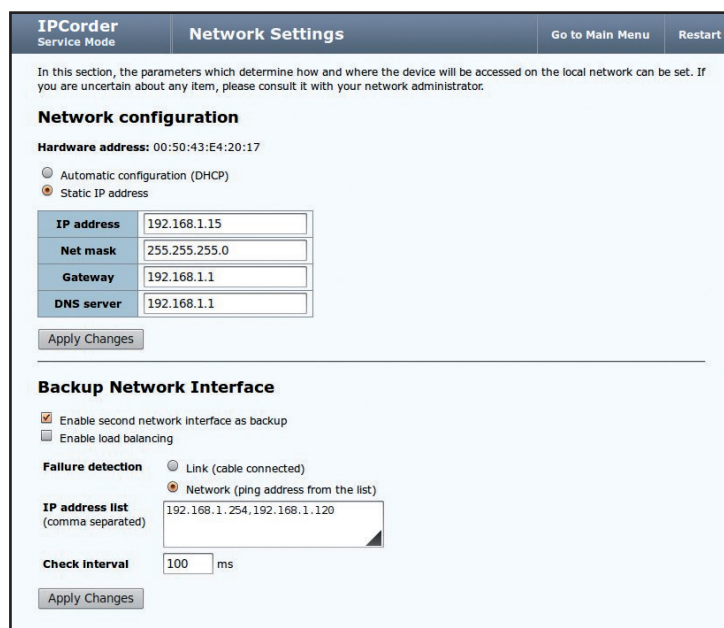
- Upgrade the firmware to the latest version for the optimal use of all the IPCorder functions. The on-line upgrade of your IPCorder is available at <http://ipcorder.com/support/ipcorder-firmware/>, where you will also find more information about the latest versions of firmware.

## Redundant Network Connection

IPCoder KRR-4016/4024/4032/4040 supports the Backup Network Interface function. This service prevents disconnection from the network in case of failure of one of network routes (both network adapters of the IPCorder must be connected). This can prevent unavailability of the IPCorder in case of unwanted removal of a network cable or switch failure. To set up this service:

- 1) Connect the second network cable to your IPCorder (use network adapter number 2) and to the switch.
- 2) Go to the Network tab in the web interface of the IPCorder:
  - If Service mode is active – continue to the **Network** page and if needed set up the basic network settings.
  - If Normal mode is active - go to the **Settings** menu in the upper part of screen, then select **Configuration – Network** and if needed set up the basic network settings.
- 3) Check the **Enable second network interface as backup** option in the **Backup Network Interface** section.
- 4) Choose method of the **Failure detection**:
  - **Link (cable connected)** – this option detects disconnection of the network cable. If the cable from network adapter no. 1 is removed, the connection through the network adapter no. 2 will be automatically activated and vice versa.
  - **Network (ping address from the list)** – this option checks if there is any traffic running through the active network adapter of the IPCorder. If no network traffic is detected, the connection through the backup network adapter will be automatically activated. Type at least one IP address of the independent server to the **IP address list** text field.
- 5) In the **Check Interval** text field, set the interval for checking availability of the connection, the default value is set to 100 ms, the typed value is used for both types of failure detection.
- 6) Click the **Apply** button to confirm the settings (use buttons **Apply Changes** and **Restart** if Service mode is active).

Note: The Backup Network Interface function is active only in Normal mode. If you are using DHCP server to obtain an IP address, it is possible that after the settings are confirmed, your IPCorder will temporarily obtain another IP address.



The screenshot shows the 'Network Settings' page in the IPCorder web interface. The page is titled 'Network Settings' and includes a 'Go to Main Menu' and 'Restart' button. A warning message states: 'In this section, the parameters which determine how and where the device will be accessed on the local network can be set. If you are uncertain about any item, please consult it with your network administrator.'

**Network configuration**

Hardware address: 00:50:43:E4:20:17

Automatic configuration (DHCP)  
 Static IP address

IP address	192.168.1.15
Net mask	255.255.255.0
Gateway	192.168.1.1
DNS server	192.168.1.1

---

**Backup Network Interface**

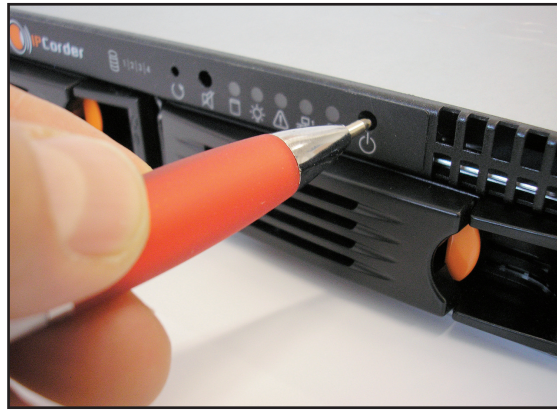
Enable second network interface as backup  
 Enable load balancing

**Failure detection**  Link (cable connected)  
 Network (ping address from the list)





**IP address list**  
(comma separated)  
192.168.1.254,192.168.1.120

**Check interval**  
100 ms

### 3. LED signalization, button actions and acoustic signalization



The front panel of IPCorder KRR-4016/4024/4032/4040 contains 5 types of LED signals:

- **The Network** diode (  ) (2x) indicates the activity of the individual network adapters.
- **The Storage** diode (  ) lights if the storage is in proper condition, blinks if the disk array is degraded and blinks fast in case of storage failure.
- The blue **Power** diode (  ) and red **Info** diode (  ) signals the following:

Status	Power LED	Info LED
Service mode is active	-	on
Normal mode is active	on	-
Found by Discover	on	blinking
IPCorder is starting	blinking	-
Factory Reset	on	fast blinking

Disk boxes are equipped with three LED diodes:

- The **blue** diode lights if the disk is connected.
- The **red** diode blinks in case of disk failure, blinks in combination with the green diode if the disk array is assembling or synchronizing, lights if the disk is not part of the disk array.
- The **green** diode indicates disk activity.

## Button function description

**Power** button (⏻):

- Performs the software shutdown on short press.
- Performs the hardware power-off if hold for 15 seconds (this is the same as unplugging the device from power supply).

**Reset** button (↻) at the front side of your IPCorder:

- Restarts to Service mode on short press (if the IPCorder is in Normal mode).
- Restarts to Normal mode on short press (if the IPCorder is in Service mode).
- Performs the factory reset if hold during the startup.

**Reset** button (↻) at the back side of your IPCorder:

- Restarts to Service mode on short press (if the IPCorder is in Normal mode).
- Restarts to Normal mode on short press (if the IPCorder is in Service mode).
- Performs the factory reset if hold for 15 seconds.

**Mute** button (🔇):

- Temporarily disable the acoustic signalization on short press.

The acoustic signalization will be activated if:

- The temperature reaches 60°C.
- The storage fails.

## 4. System Requirements

The system requirements are partly dependent on the version of the installed firmware. The client computer should meet the following minimum requirements for the installed firmware:

- **Operating system:** Microsoft Windows 2003, 2008, XP, Vista, 7 (32 and 64 bit version); Mac OS X 10.5 (only Intel x86), 10.6 and 10.7; Linux 2.6 or newer (recommended JAVA ORACLE co.).
- **Internet browser:** Mozilla Firefox 10 ESR, 14 and newer (recommended); Internet Explorer 8 and 9 (only 32-bit version); Chrome 21 and newer; Safari 5 (only on Mac OS X).
- Enabled JavaScript and Cookies (check the settings of your Internet browser).
- Version Java Oracle 6 or newer (always only 32bit version), we recommend Oracle JAVA 7 – freely available for downloading on the website <http://www.java.com>.
- **Hardware configuration:** depends on the type and number of monitored cameras, the minimum recommended is a 2 GHz processor and 1 GB RAM.

IPCorder allows the user to download entire videos and pictures from videos saved on a hard disk. The pictures are in standard JPEG format and can be displayed in every standard picture browser. You need an installed FFDSHOW codec or other similar filter to play a video. The simplest way is to play videos in a VLC player which already contains all the necessary codecs. This is available for free download at <http://www.videolan.org>. The FFDSHOW codec can be downloaded for example from address <http://www.freecodecs.com/download/FFDshow.htm>.

## 5. Support

In the case of any problems, contact your vendor, or directly contact the manufacturer's technical support department of KOUKAAM a.s. company at the address [support@koukaam.se](mailto:support@koukaam.se). Before you do so, please check that your IPCorder is equipped with the latest version of firmware (your problem is probably resolved in the new version). We also recommend visiting FAQ at <http://www.ipcorder.com> in the support section where the FAQs are fully answered.

We believe that you will be satisfied with our product. In case of queries or reminders concerning the functionality of IPCorder, please contact us.

The KOUKAAM Team

KOUKAAM a.s.  
Kaplanova 2252/8  
148 00 Prague 4  
[www.koukaam.se](http://www.koukaam.se)  
[support@koukaam.se](mailto:support@koukaam.se)

The manufacturer bears no responsibility for any technical or printing errors and reserves the right to make any changes in the product and in this User Manual without prior notice. Any such changes shall be announced via the product's website [www.koukaam.se](http://www.koukaam.se).

The manufacturer does not provide warranties of any kind whatsoever with regard to any information given in this user manual or any derived warranties regarding product saleability or its fitness for a specific use.

In particular, the manufacturer does not provide any warranties for defects caused by incorrect use of the product, failure to abide by the instructions and recommendations given in the user manual and for any defects caused by unprofessional activities of third parties outside the manufacturer's authorized service shop.

January 2013

© 2013 KOUKAAM a.s. All rights reserved.