

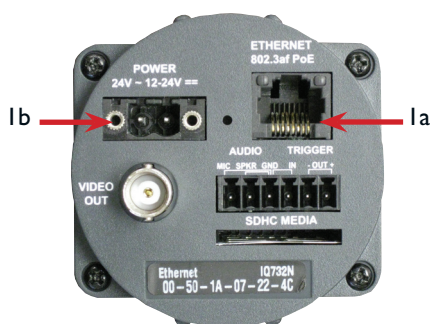
IQeye HD I080p Series

Models: IQ732SI, IQ732NI

1. Plug the IQeye camera into the network.

- If using PoE, plug the camera into an IEEE 802.3af PoE injector or switch.
- If using direct power, connect a 12-24V DC or 24V AC power supply to the supplied terminal block.

NOTE: Power supply polarity is not important.



IQeye HD I080p Series Power Options

2. Adjust field of view and focus

Field of view and focus adjustments on the IQ732 Series cameras can be performed using an analog monitor or a browser:

a. Using an Analog Monitor

To focus using analog video out, connect a field service monitor to the "Video Out" (BNC Connector) on the IQ732 camera. The analog video will be available until the first digital stream is requested via the Ethernet port.



IQeye HD I080p Series BNC Connection

b. Using a Browser

- Insert the IQtools CD into the CD drive of the PC. Once the CD starts, run IQfinder either from the CD by clicking "Scan for IQeye cameras on my network" or by installing IQfinder on the local machine by selecting "Install IQfinder".
- Click "Scan for IQeye cameras on my network" to find IQeye cameras. The detected cameras will be displayed in the IQfinder window. Select a camera from the list and click "Assign IP" to edit the selected camera's network settings.



IQtools CD

- The "Assign IP" window allows the IP Address, Subnet and Gateway of the camera to be changed and alternatively the camera to be configured for DHCP operation. Click the "Apply" button after making the desired changes.

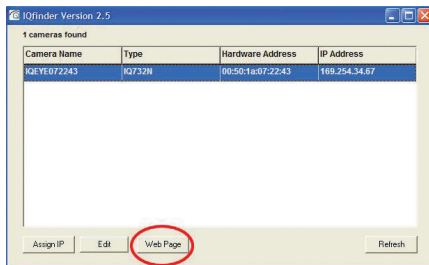
NOTE: Changing between a static IP address and DHCP will require the camera to be rebooted.



IQfinder – Assign IP Address

Quick Install Guide

iv. To view a camera, double click a camera entry or highlight a camera in the list and click the “Web Page” button. The “Live” page will be displayed through your default browser (IE recommended). It is also possible to open Internet Explorer and enter the IP address of the IQeye camera in the address field of the browser.



IQfinder – Web Page

3. Additional Configuration

To perform further configuration of the camera click on the “Setup” tab.

NOTE: The default username is “root” and the default password is “system”.

4. Using VLC for H.264 Stream

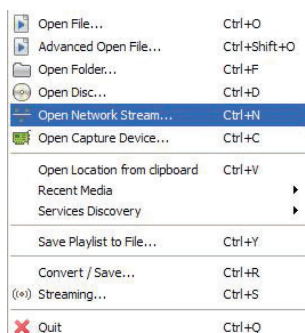
a. To prepare the camera to serve an H.264 stream, install VLC Player (Version 1.0.1 or higher) from <https://videolan.org/vlc/> and use default installation parameters.

b. Launch VLC Player:



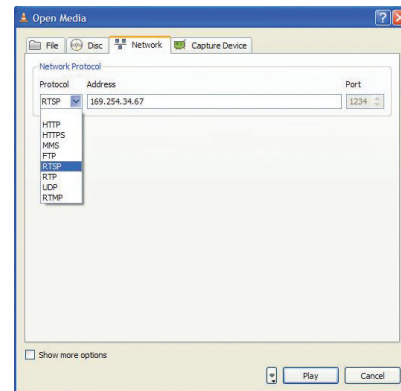
VLC Player

c. Click on “Media” and then “Open Network Stream”.



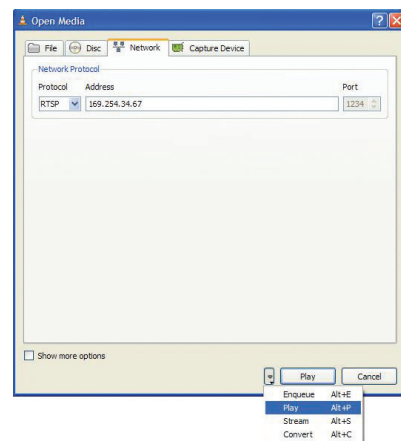
Open Network Stream

d. On the “Network” tab choose RTSP under the “Protocol” drop down. Then enter the IP address of the IQ732 camera under the “Address” field.



RTSP Protocol

e. Click the down arrow next to the “Play” button on the bottom right to expand the list. From the menu choose “Play”. The video player will open with the live H.264 video stream.



H.264 Stream

5. Additional Documentation

For additional information and technical documents, including detailed configuration of VLC, please visit www.iqeye.com/faq

IQinVision 

33122 Valle Road
San Juan Capistrano, CA92675-4853 USA
Toll-Free within U.S 877.850.0805
phone + 1.949.369.8100
fax + 1.949.369.8105

www.iqeye.com

#901-0181 Rev.A